

WOLONG
Power your future

WERMA5 series
ferrite assisted
reluctance synchronous motor



WOLONG ELECTRIC GROUP CO.,LTD.

Add : No.1801 West Renmin Road,Shangyu District,Shaoxing,Zhejiang,China
Web: www.wolong-electric.com

www.wolong-electric.com

WOLONG
Power your future

Introduction

Wolong, founded in 1984 and headquartered in Shaoxing, Zhejiang Province, is a global leading industrial enterprise committed to providing safe, efficient, intelligentized and green power drive system solutions with life-long supporting services to global users.

By utilizing cutting edge permanent magnet, nanotechnology and silicon carbide technologies, Wolong has built China's first motor material demonstration platform, that satisfy the highest standards for power density and energy efficiency of motors and generators. With more than 30 years of development, the company has grown into one of the World's top three motor and drive manufacturers and sales enterprises. Wolong insists on technological innovation to lead the industrial reform, actively supports business digital transformation, continuously develops efficient drive system solutions and creates smart industry brain for the motor and drive life cycle management.

3 Manufacturing bases, 39 factories

Asia (China, Vietnam)
Europe (UK, Germany, Italy, Poland, Serbia)
America (Mexico)

1 Global Sales HQ and 4 Regional Sales HQs

Shanghai, China (Global Sales Headquarter) | Beijing, China (North Region)
Haiphong, Vietnam (APAC) | Mönchengladbach, Germany (EMEA)
Houston, U.S. (Americas)

4 R&D Centers

China | America | Japan | India



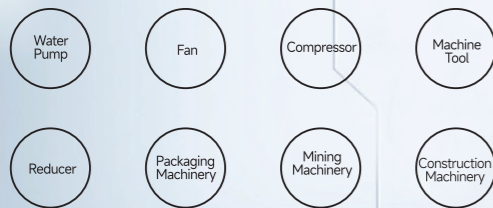
- 📍 R&D Center
- 📍 Manufacturing Plant
- 🌐 GSH HQs
- ▲ Global Region HQ & BCH HQs
- ▲ Sales and Service Network

WERMA5 Product Overview

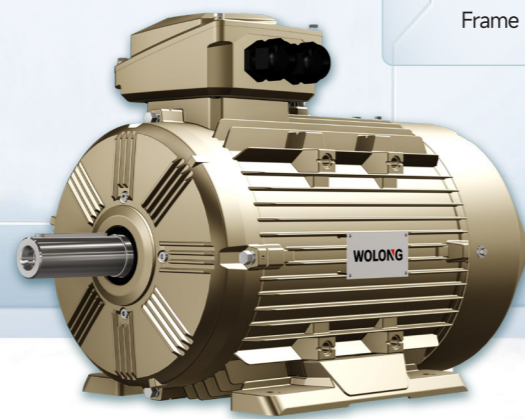
The energy efficiency of WERMA5 series permanent-magnet reluctance synchronous motors conforms to IE5 class in IEC TS 60034-30-2. It mainly uses the torque (reluctance torque) generated by the special salient-pole design of the rotor to drive the motor, and uses high-temperature-resistance ferrite as its auxiliary magnetic material so that it is of high-energy-efficiency, stability, reliability, easy-maintenance and low-cost, and can meet various complex industrial environments. In this way, it has reliability of asynchronous motor and high performance of permanent magnet motor. Even with the same power and torque output, the framesize can be smaller. With its self-fan-cooled design, it can run at variable speeds driven by the frequency converter without forced ventilation and cooling. With great performance in constant torque at low speed and wide speed regulation range, it is highly efficient in full speed regulation range. The installation dimensions of each frame size are consistent with those of the induction motor, and conform to IEC and relevant national standards, so that it is convenient for customers to install and use.

WERMA5 series permanent-magnet reluctance synchronous motors can be matched with multi-brand general frequency converters. After long-term experiments, this motor is ideally matched with Wolong WD series high-performance vector frequency converter, is suitable for applications with strict requirements on speed regulation, accurate control at low speed, low noise and compact design.

Widely applicable to



Aluminum motor
Flexible feet
Frame size 80~160



Model Description

Motor code description is as follows

WERM A 5-132S-22-3000

Rated speed(r/min)

Rated power(kW)

Frame size

Efficiency level: IE5

Housing material code

A- Aluminum enclosure motor

Product code:ferrite assisted reluctance synchronous motor

Product technical characteristics

The Motor features		
Item	Standard features	Optional (Special)
Frame size	80~160	-
Rated power	0.37 ~ 30kW	-
Rated speed	3000、1500、1000r/min	-
Rated voltage	380V	400V or customization
Duty	S1	S2、S3 and so on
Efficiency level	IE5&GB1	-
Mounting option	B3	B5、B35、V1 and so on
Insulation	F (Δ T 80K)	H
S.F.	1	-
Protection	IP55	IP56、IP65、IP66
Cooling mode	IC411	IC416
Frame material	Cast aluminium	-
Terminal box material	Cast aluminium	-
Terminal box location	Top	Right or left
Bearing lubrication	Maintenance free bearings	-
Motor protection device	-	Protective devices
Converter	-	Converter
Topcoat's color	Federal color code 33303	Customization

WERMA5 Advantages

Structural advantages

Advantage of WE platform

WERMA5 series motor inherit the innovative features of the WE induction motor series uniformly designed by Wolong, with simple and elegant appearance, outstanding texture, high recognition and perfect combination of appearance and function

The shape of the terminal box with hexagonal elements increases the internal space and makes the electrical safety performance more reliable



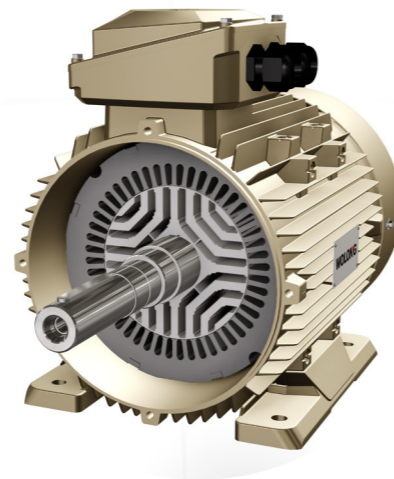
H160 and below frame size can provide top lifting ring double lifting ring, with high safety coefficient and large lifting margin



Adopting the optimal design of the blade and chassis taper, the overall optimization and simulation design of the cooling air circuit composed of the wind cover to realize the optimization of the cooling effect

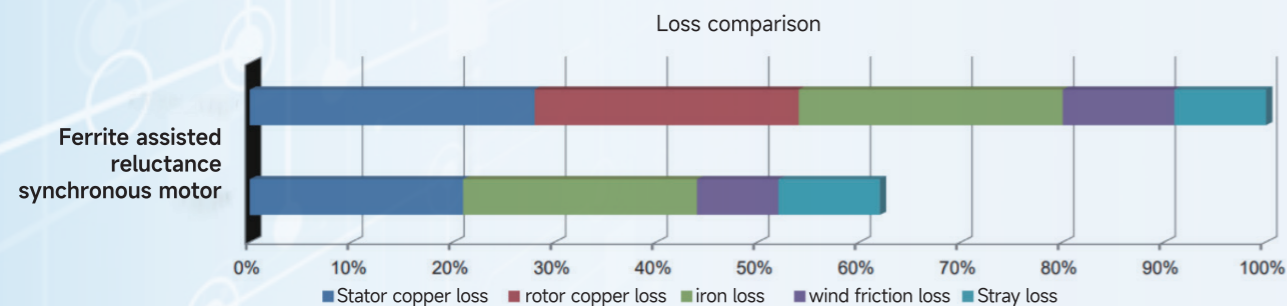


The machine is compact in design, IEC standard in size, high interchangeability and flexible in outlet



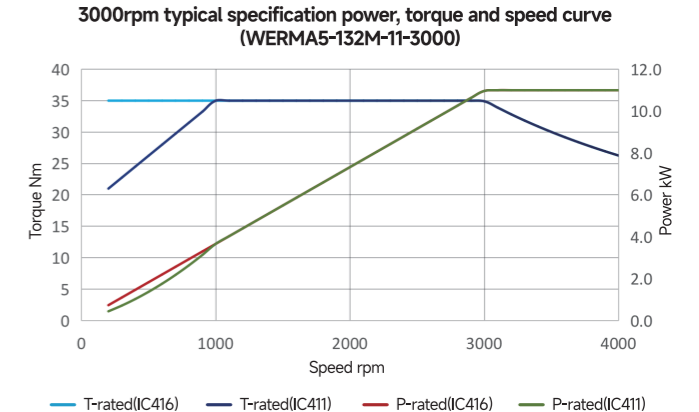
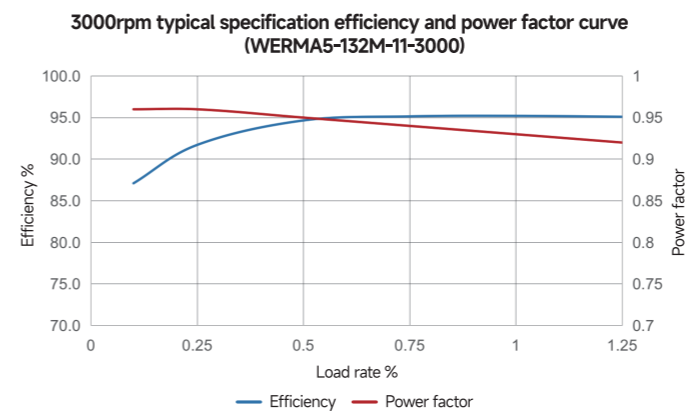
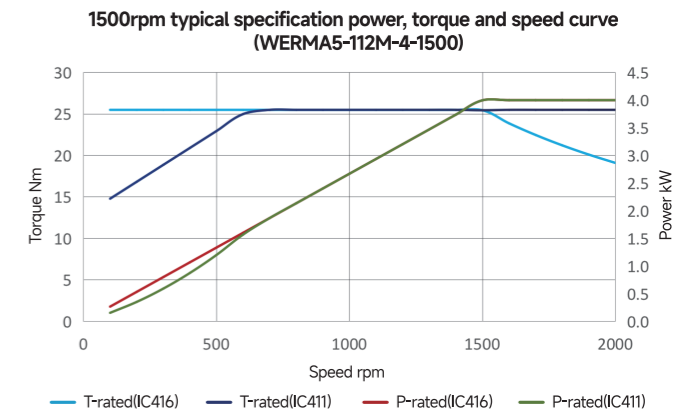
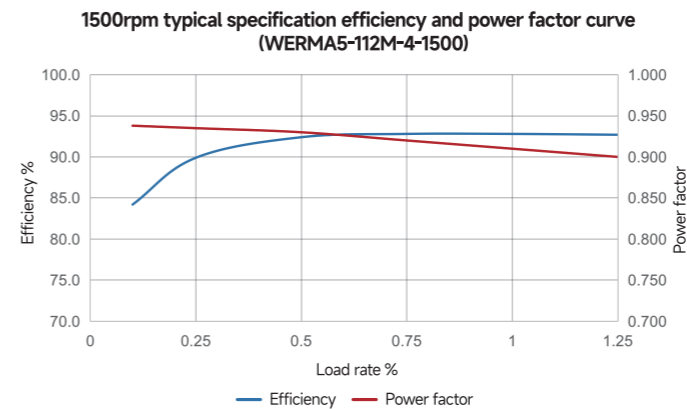
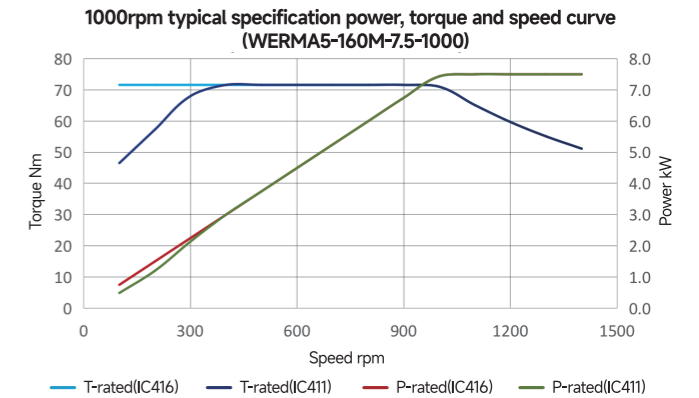
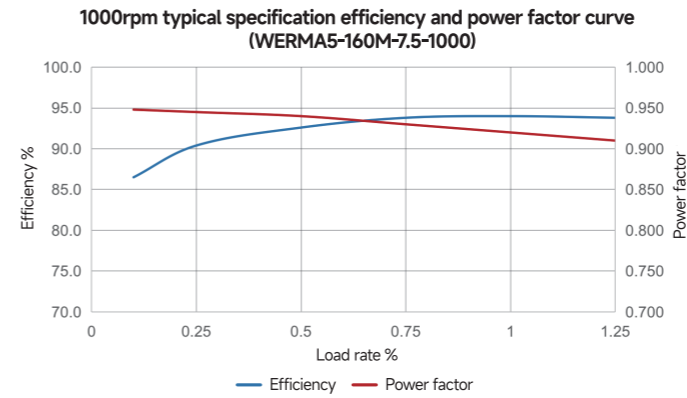
Reduced motor losses

Compared to induction motors, the loss is significantly reduced



The motor provides ultra-high efficiency at full range speed

WERMA5 series ferrite assisted reluctance synchronous motor can maintain constant torque operation before the rated speed, and has a characteristic of operating at 1.3 times constant power during over-speed. Regardless of speed or load, it can provide ultra-high efficiency and have superior efficiency compared with the induction motor in the full speed range, especially in the case of low speed or low torque output, the efficiency and power factor increase are more significant.



Advantages of WERMA5 and WD series converters

Best performance when it is matched and adjusted with Wolong inverter series to lift working efficiency of the whole driving system to more than 98%.

Advanced energy-saving control technology, perfect match motor with drive to achieve better energy-saving and control.

With pre-set motor parameters in driver, no need for self-learning, simplify adjustment, and improve application efficiency.

Simplify after-sales service and avoid after-sales coordination caused by different sources of motors and drives.

Integrated sourcing of motors and drives to simplify your supply chain and make supplier management easier.

Integrated failure Diagnosis of drives and motors to easily recognize system faults.

Starting torque

0.5Hz output 150% rated torque (SVC)
0.0Hz output 200% rated torque (FVC)

Low-frequency characteristics

1Hz rated load stable operation (SVC)
0.0Hz rated load stable operation (FVC)

Speed control accuracy

Error \leq 0.1 rated speed (SVC)
Error \leq 0.05 rated speed (FVC)

Torque control accuracy

Asynchronous motor \pm 10%
Synchronous motor \pm 5% (SVC)

Asynchronous motor \pm 5%
Synchronous motor \pm 2.5% (FVC)

Overload capacity

Heavy load: 150% 60s
Light load: 120% 60s

Excellent current suppression ability

Suppress the surge current generated by sudden load changes and reduce equipment failure and shutdown

WERMA5 electrical performance parameters

Standard center height&drop center height (3000r/min~1000r/min)

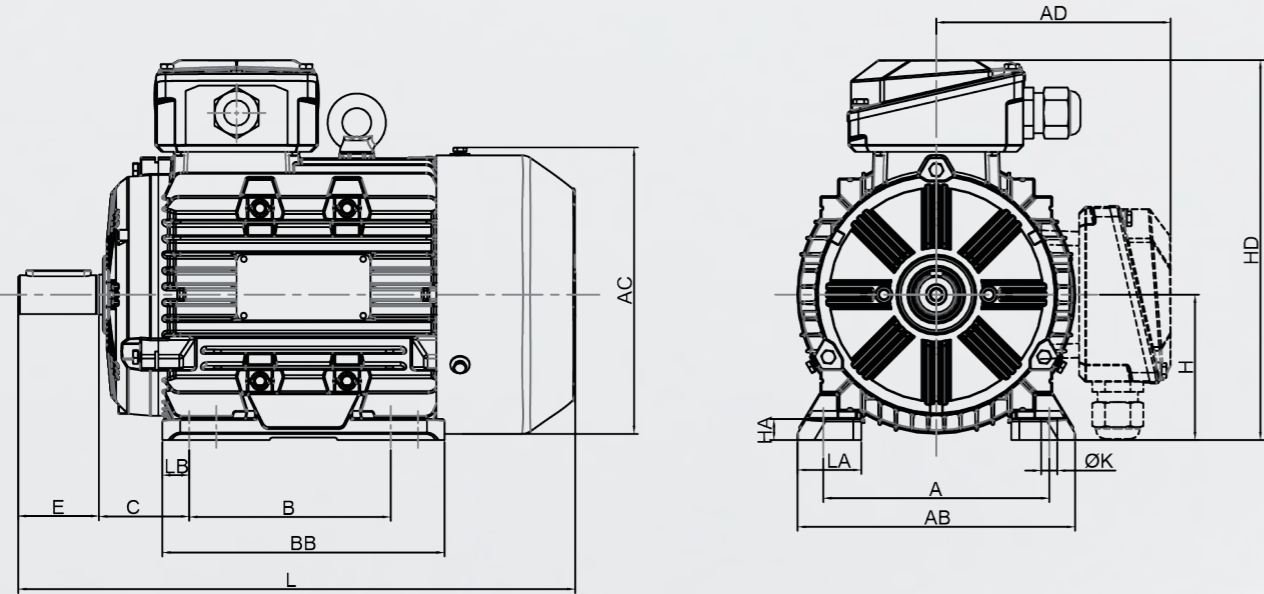
Type	Rated power		Full-load torque	Pole	Frequency	380 V			Noise		Moment of inertia	Weight	Remarks	
	kW	HP				Rated speed	Rated efficiency	P.F.	Rated current	L _p				L _w
			Nm	Hz	r/min						%	A		
WERMA5-80M-0.75-3000	0.75	1	2.4	4	100	3000	88.6	0.86	1.6	50	62	1.34	9	Standard center height
WERMA5-80M-1.1-3000	1.1	1.5	3.5	4	100	3000	89.8	0.86	2.3	50	62	1.42	12	
WERMA5-90S-1.5-3000	1.5	2	4.8	4	100	3000	90.9	0.86	3.1	55	67	2.50	14	
WERMA5-90L-2.2-3000	2.2	3	7	4	100	3000	91.8	0.86	4.5	55	67	2.87	14	
WERMA5-100L-3-3000	3	4	9.5	4	100	3000	92.6	0.86	6.0	62	74	6.67	20	
WERMA5-112M-4-3000	4	5.5	12.7	4	100	3000	93.3	0.88	7.8	65	77	10.99	28	
WERMA5-132S-5.5-3000	5.5	7.5	17.5	4	100	3000	94	0.88	10.7	67	79	50.76	32	
WERMA5-132S-7.5-3000	7.5	10	23.9	4	100	3000	94.5	0.88	14.5	67	79	53.40	33	
WERMA5-160M-11-3000	11	15	35	4	100	3000	95	0.88	21.1	68	81	64.56	55	
WERMA5-160M-15-3000	15	20	48	4	100	3000	95.3	0.88	28.7	68	81	89.16	66	
WERMA5-160L-18.5-3000	18.5	25	59	4	100	3000	95.6	0.9	34.5	68	81	94.08	70	
WERMA5-80M-0.55-1500	0.55	0.75	3.5	4	50	1500	86.7	0.86	1.2	44	56	1.42	12	
WERMA5-80M-0.75-1500	0.75	1	4.8	4	50	1500	88.2	0.86	1.6	44	56	2.24	13	
WERMA5-90S-1.1-1500	1.1	1.5	7	4	50	1500	89.5	0.86	2.3	47	59	2.68	15	
WERMA5-90L-1.5-1500	1.5	2	9.6	4	50	1500	90.4	0.86	3.1	47	59	3.59	16	
WERMA5-100L-2.2-1500	2.2	3	14	4	50	1500	91.4	0.86	4.5	52	64	9.56	25	
WERMA5-100L-3-1500	3	4	19.1	4	50	1500	92.1	0.88	5.9	52	64	12.48	30	
WERMA5-112M-4-1500	4	5.5	25.5	4	50	1500	92.8	0.88	7.9	53	65	17.28	37	
WERMA5-132S-5.5-1500	5.5	7.5	38	4	50	1500	93.4	0.88	10.7	59	71	71.88	41	
WERMA5-132M-7.5-1500	7.5	10.2	47.8	4	50	1500	94	0.88	14.5	59	71	94.68	52	
WERMA5-160M-11-1500	11	15	70	4	50	1500	94.6	0.88	21.2	60	73	101.52	72	
WERMA5-160L-15-1500	15	20	95.5	4	50	1500	95.1	0.9	28.1	60	73	130.80	86	
WERMA5-80M-0.37-1000	0.37	0.5	3.5	4	33.3	1000	81.6	0.86	0.8	42	54	1.42	12	
WERMA5-80M-0.55-1000	0.55	0.75	5.3	4	33.3	1000	85.9	0.86	1.2	42	54	2.24	13	
WERMA5-90S-0.75-1000	0.75	1	7.2	4	33.3	1000	87.4	0.86	1.6	45	57	2.54	15	
WERMA5-90L-1.1-1000	1.1	1.5	10.5	4	33.3	1000	88.7	0.86	2.3	45	57	4.14	18	
WERMA5-100L-1.5-1000	1.5	2	14.3	4	33.3	1000	89.9	0.86	3.1	49	61	10.52	26	
WERMA5-112M-2.2-1000	2.2	3	21	4	33.3	1000	90.9	0.88	4.4	53	65	15.48	34	
WERMA5-132S-3-1000	3	4	28.7	4	33.3	1000	91.8	0.88	6.0	57	69	66.60	39	
WERMA5-132M-4-1000	4	5.5	38.2	4	33.3	1000	92.7	0.88	7.9	57	69	84.12	47	
WERMA5-132M-5.5-1000	5.5	7.5	47.8	4	33.3	1000	93.4	0.88	10.7	57	69	105.24	57	
WERMA5-160M-7.5-1000	7.5	10	71.7	4	33.3	1000	94	0.88	14.5	60	73	101.52	71	
WERMA5-160L-11-1000	11	15	105	4	33.3	1000	94.5	0.9	20.7	60	73	139.20	90	
WERMA5-80M-1.5-3000	1.5	2	4.8	4	100	3000	90.9	0.86	3.1	50	62	4.61	18	
WERMA5-90L-3-3000	3	4	9.5	4	100	3000	92.6	0.86	6.0	55	67	4.99	23	
WERMA5-100L-4-3000	4	5.5	12.7	4	100	3000	93.3	0.89	7.7	62	74	13.32	29	
WERMA5-112M-5.5-3000	5.5	7.5	17.5	4	100	3000	94	0.89	10.5	67	79	18.00	38	
WERMA5-112M-7.5-3000	7.5	10.2	23.9	4	100	3000	94.5	0.89	14.0	68	80	21.20	41	
WERMA5-132M-11-3000	11	15	35	4	100	3000	95	0.89	20.9	68	81	127.08	54	
WERMA5-160L-22-3000	22	30	70	4	100	3000	95.9	0.91	40.4	68	81	191.28	87	
WERMA5-160L-30-3000	30	41	95.5	4	100	3000	96.1	0.91	55.0	68	81	204.24	98	

Lowering center height

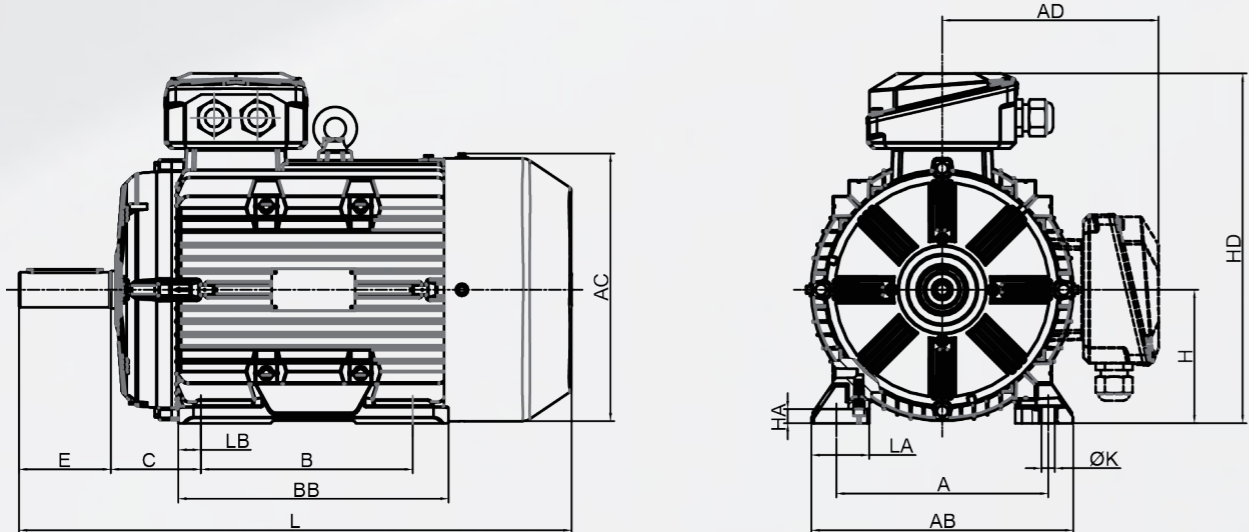
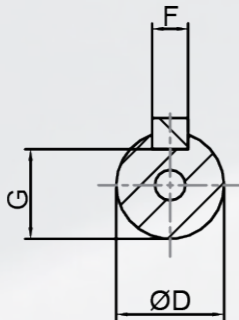
B3 Motor Installation and Dimensions

▼ B3 Cast AL H80~H160

IM B3
IM 1001
80~100
80~90S Motor without eyebolt

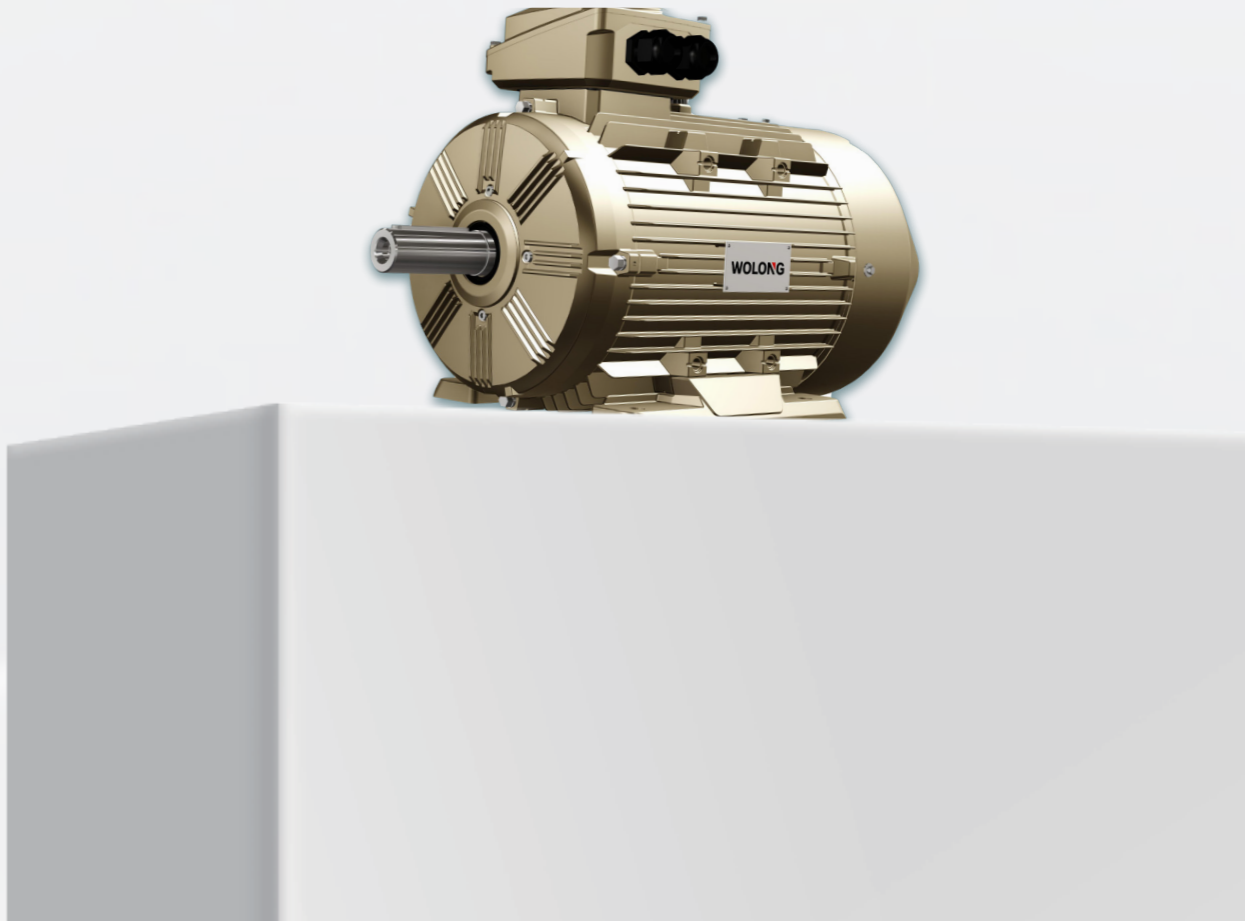


IM B3
IM 1001
112~160



▼ Installation and overall dimensions of B3 motor

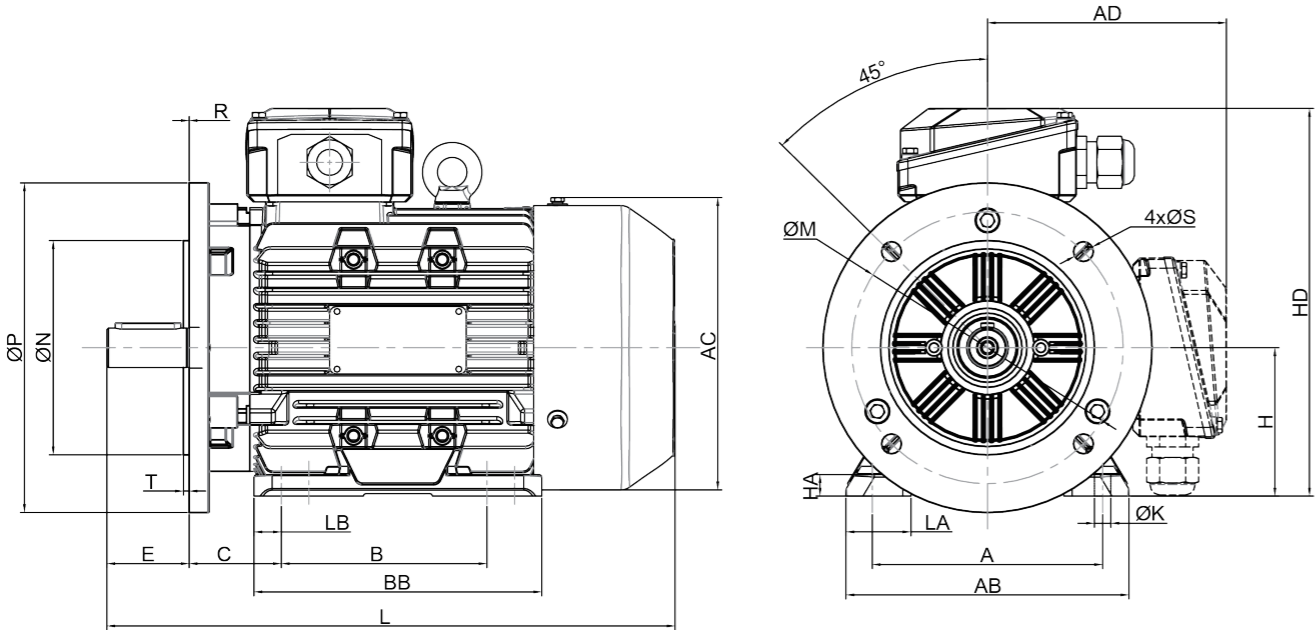
Frame	Speed (r/min)	Mounting dimensions (mm)									Boundary dimensions(mm)								
		A	B	C	D	E	F	G	H	K	LA	LB	AB	BB	HA	AC	AD	HD	L
80M	1000~3000	125	100	50	19	40	6	15.5	80	10	38.5	12.5	156	125	10	160	131	211	315
90S	1000~3000	140	100	56	24	50	8	20	90	10	39.5	16.6	172	150	13	177	149	244	329
90L	1000~3000	140	125	56	24	50	8	20	90	10	39.5	16.6	172	175	13	177	149	244	351
100L	1000~3000	160	140	63	28	60	8	24	100	12	46.5	19	200	198	13	208	163	268	401
112M	1000~3000	190	140	70	28	60	8	24	112	12	56.5	19	228	201	15	226	189	305	417
132S	1000~3000	216	140	89	38	80	10	33	132	12	60	45	262	230	18	260	210	345	450
132M	1000~3000	216	178	89	38	80	10	33	132	12	60	36	262	250	18	260	210	345	490
160M	1000~3000	254	210	108	42	110	12	37	160	14.5	69.5	27	314	280	20	320	260	422	620
160L	1000~3000	254	254	108	42	110	12	37	160	14.5	69.5	27	314	324	20	320	260	422	665



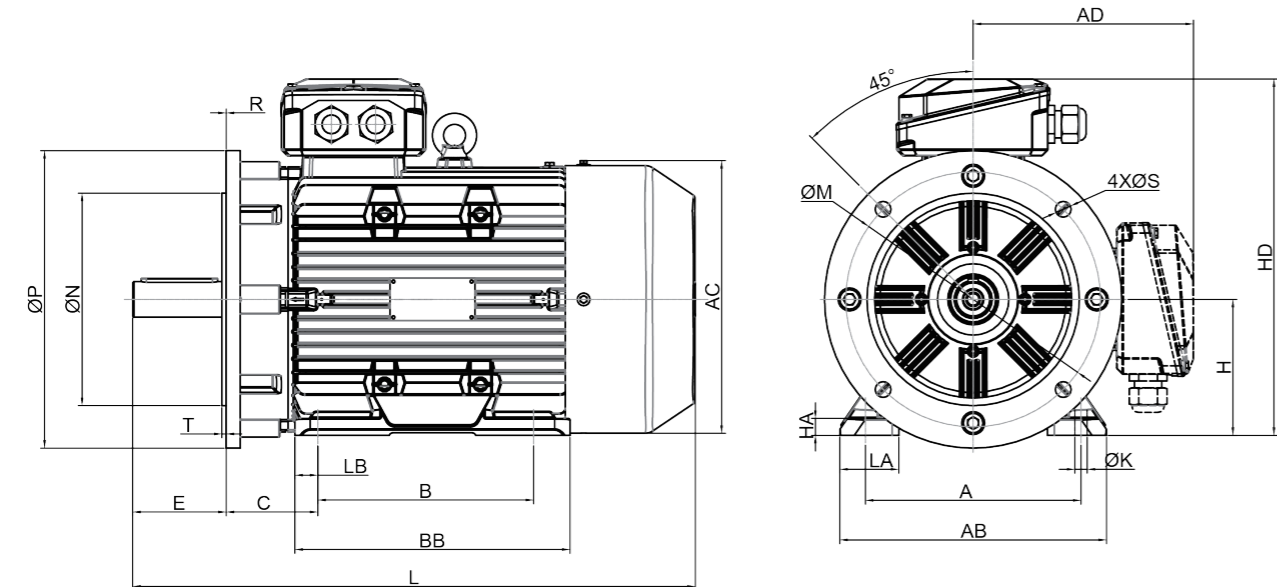
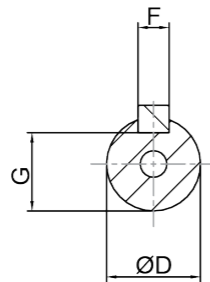
B35 Motor Installation and Dimensions

▼ B35 Cast AL H80~H160

IM B35
IM 2001
80~100
80~90S Motor without eyebolt

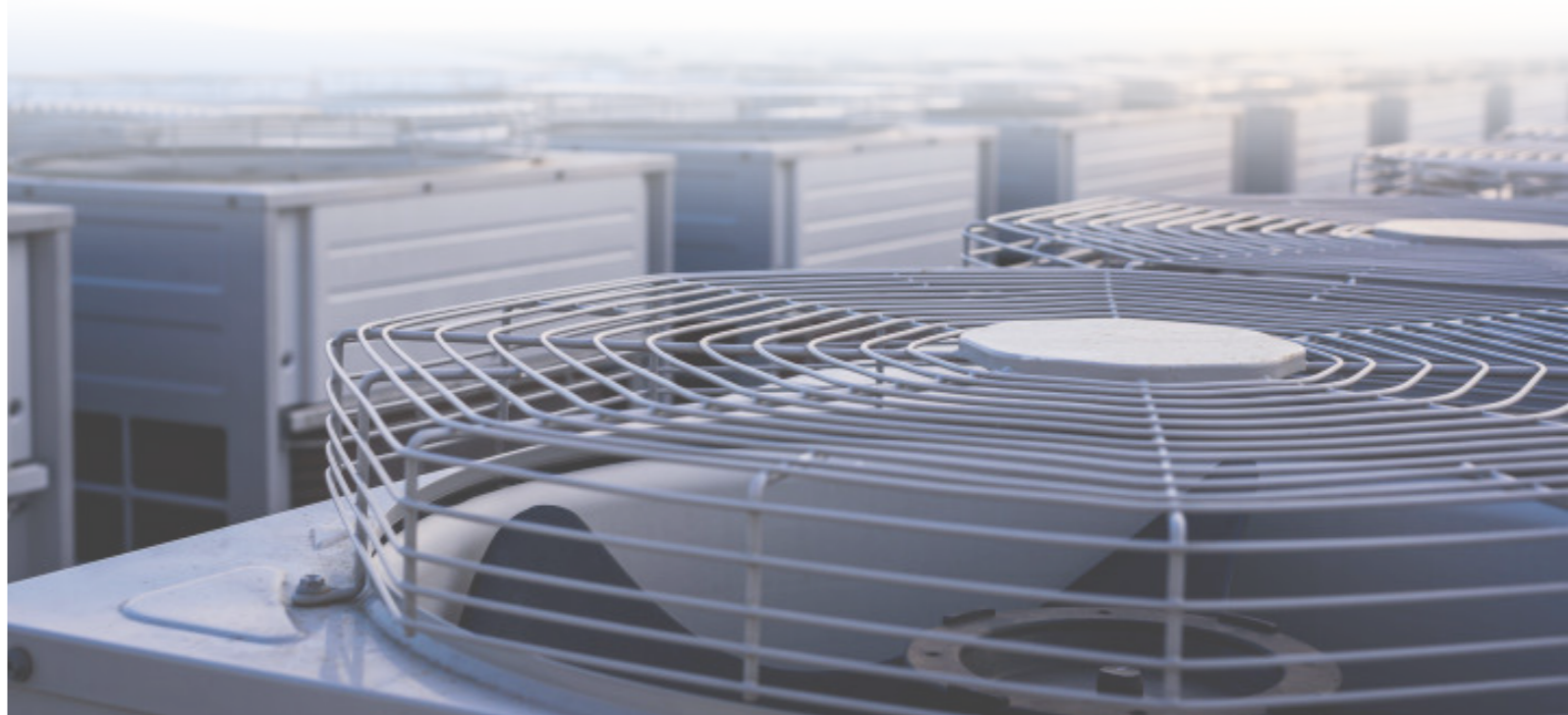


IM B35
IM 2001
112~160



▼ Installation and overall dimensions of B35 motor

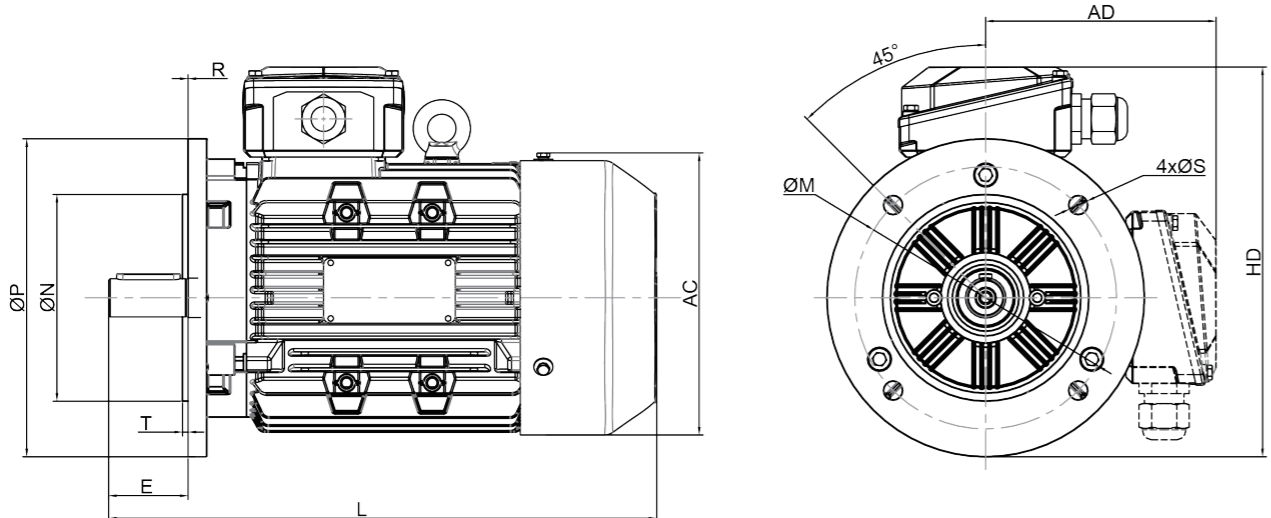
Frame	Speed (r/min)	Mounting dimensions (mm)														Boundary dimensions(mm)									
		A	B	C	D	E	F	G	H	K	M	N	P	R	S	T	LA	LB	AB	BB	HA	AC	AD	HD	L
80M	1000~3000	125	100	50	19	40	6	15.5	80	10	165	130	200	0±1.5	12	3.5	38.5	12.5	156	125	10	160	131	211	315
90S	1000~3000	140	100	56	24	50	8	20	90	10	165	130	200	0±1.5	12	3.5	39.5	16.6	172	150	13	177	149	244	329
90L	1000~3000	140	125	56	24	50	8	20	90	10	165	130	200	0±1.5	12	3.5	39.5	16.6	172	175	13	177	149	244	351
100L	1000~3000	160	140	63	28	60	8	24	100	12	215	180	250	0±2.0	14.5	4	46.5	19	200	198	13	208	163	268	401
112M	1000~3000	190	140	70	28	60	8	24	112	12	215	180	250	0±2.0	14.5	4	56.5	19	228	201	15	226	189	305	417
132S	1000~3000	216	140	89	38	80	10	33	132	12	265	230	300	0±2.0	14.5	4	60	45	262	230	18	260	210	345	450
132M	1000~3000	216	178	89	38	80	10	33	132	12	265	230	300	0±2.0	14.5	4	60	36	262	250	18	260	210	345	490
160M	1000~3000	254	210	108	42	110	12	37	160	14.5	300	250	350	0±3.0	18.5	5	69.5	27	314	280	20	320	260	422	620
160L	1000~3000	254	254	108	42	110	12	37	160	14.5	300	250	350	0±3.0	18.5	5	69.5	27	314	324	20	320	260	422	665



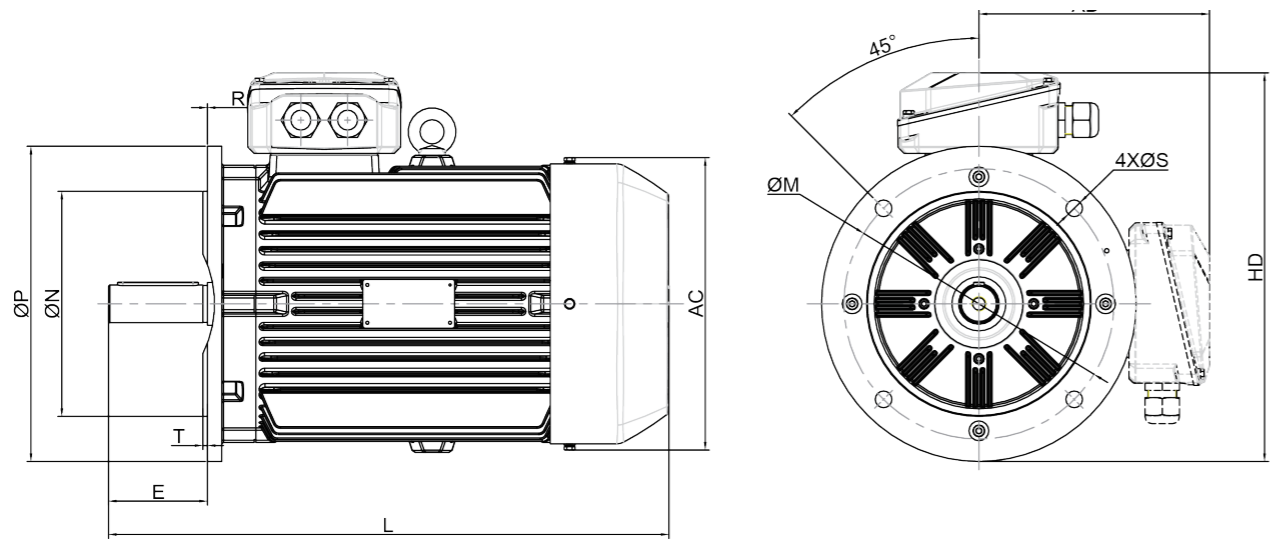
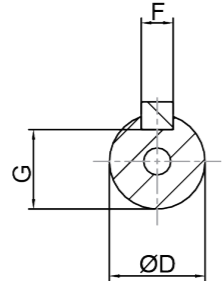
B5&V1 Motor Installation and Dimensions

▼ B5&V1 Cast AL H80~H160

IM B5/IM V1
IM 3001/IM3011
80~100
80~90S Motor without eyebolt



IM B5/IM V1
IM 3001/IM 3011
112~160



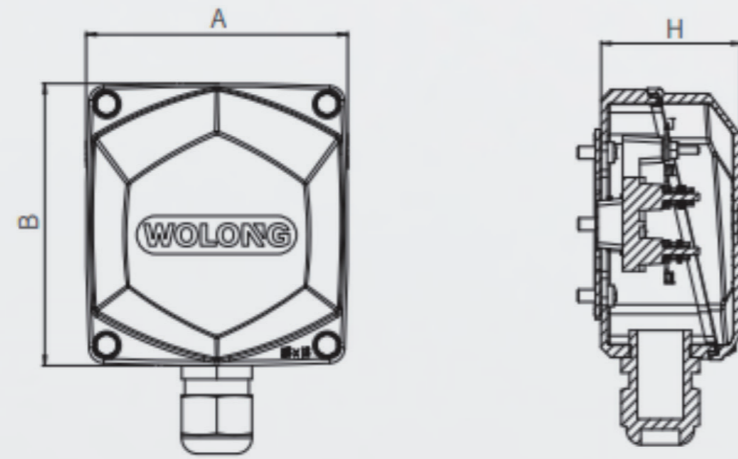
▼ Installation and overall dimensions of B5/V1 motor

Frame	Speed (r/min)	Mounting dimensions (mm)										Boundary dimensions(mm)			
		D	E	F	G	M	N	P	R	S	T	AC	AD	HD	L
80M	1000~3000	19	40	6	15.5	165	130	200	0±1.5	12	3.5	160	131	231	315
90S	1000~3000	24	50	8	20	165	130	200	0±1.5	12	3.5	177	149	254	329
90L	1000~3000	24	50	8	20	165	130	200	0±1.5	12	3.5	177	149	254	351
100L	1000~3000	28	60	8	24	215	180	250	0±2.0	14.5	4	208	163	293	401
112M	1000~3000	28	60	8	24	215	180	250	0±2.0	14.5	4	226	189	315	417
132S	1000~3000	38	80	10	33	265	230	300	0±2.0	14.5	4	260	210	363	450
132M	1000~3000	38	80	10	33	265	230	300	0±2.0	14.5	4	260	210	363	490
160M	1000~3000	42	110	12	37	300	250	350	0±3.0	18.5	5	320	260	437	620
160L	1000~3000	42	110	12	37	300	250	350	0±3.0	18.5	5	320	260	437	665



Technical description

Terminal box



Standard Center High Series				
Frame	Boundary dimension AxBxH(mm)	Number and size of outlet holes	Lock cable diameter range(mm)	Thread of terminal
80	90x96x50	1-M25x1.5	Φ8~Φ12	M4
90~100	102x110x57.5	1-M25x1.5	Φ8~Φ12	M4
112~132	136x146x72	2-M25x1.5	Φ8~Φ12	M5
160	171x181x91	2-M32x1.5	Φ16~Φ21	M6

Standard Center High Series				
Frame	Boundary dimension AxBxH(mm)	Number and size of outlet holes	Single hole screw sleeve can lock cable diameter range(mm)	Thread of terminal
80	90x96x50	1-M20x1.5	Φ6~Φ12	M4
90~100	102x110x57.5	1-M25x1.5	Φ13~Φ18	M4
112~132	136x146x72	2-M32x1.5	Φ16~Φ21	M6
160	171x181x91	2-M40x1.5	Φ22~Φ32	M8

Lifting ring

Frame	Lifting ring	Horizontal installation	
		Quantity	Location
80~90S	---	---	---
90L~112	M8	1	A lifting ring mounted on the top of the frame
132	M10	1	
160	M12	1	

Bearing type

Standard Center High Series			
Frame	Speed r/min	DE	NDE
80	1000-3000	6204ZZ	6204ZZ
90	1000-3000	6205ZZ	6203ZZ
100	1000-3000	6206ZZ	6205ZZ
112	1000-3000	6206ZZ	6206ZZ
132	1000-3000	6208ZZ	6305ZZ
160	1000-3000	6309ZZ	6307ZZ

Standard Center High Series			
Frame	Speed r/min	DE	NDE
80	1000~3000	6204ZZ	6204ZZ
90	1000~3000	6205ZZ	6203ZZ
100	1000~3000	6206ZZ	6205ZZ
112	1000~3000	6206ZZ	6206ZZ
132	1000~3000	6208ZZ	6208ZZ
160	1000~3000	6309ZZ	6309ZZ

Motor ordering guide

▼ The selection of motors should consider the following factors



Voltage

380V; 660V; Others

Speed

3000r/min; 1500r/min;
 1000r/min

Mounting type

IMB3; IMB35; IMB5;
 IMV1; Others

Operating environment

Indoor; Outdoor;
 Environmental temperature;
 Altitude; Corrosion prevention;
 Others

Protection class

IP55; IP56; Others

Equipment type

Fan; Water pump;
 Compressor; Others

Connection mode between the motor and load

Coupling; Belt; Others

Operating mode

S1; Others

Insulation class

155(F); 180(H); Others

Rotation direction

Clockwise; Counterclockwise
 Bidirectional

Wiring box position

The top of the motor faces right
(viewed from the shaft extension);
 Others

Wiring box inlet type

Screw sleeve; Others

Digital services

▼ Example

Requirements				
The center height of the frame is 160	11kW	1000r/min	The frame is with foot	End cover without flange
380V	Clockwise direction	Protection class IP55	Insulation class F	Efficiency IE5

The motors are labeled as follows: WERMA5-160L-11-1000 380V IMB3 IP55 F IE5

If users have special requirements on voltage, speed, protection level, rotation direction, installation mode, double shaft extension, noise, vibration, and connection of junction box, they should get the approval of technicians before manufacturing.

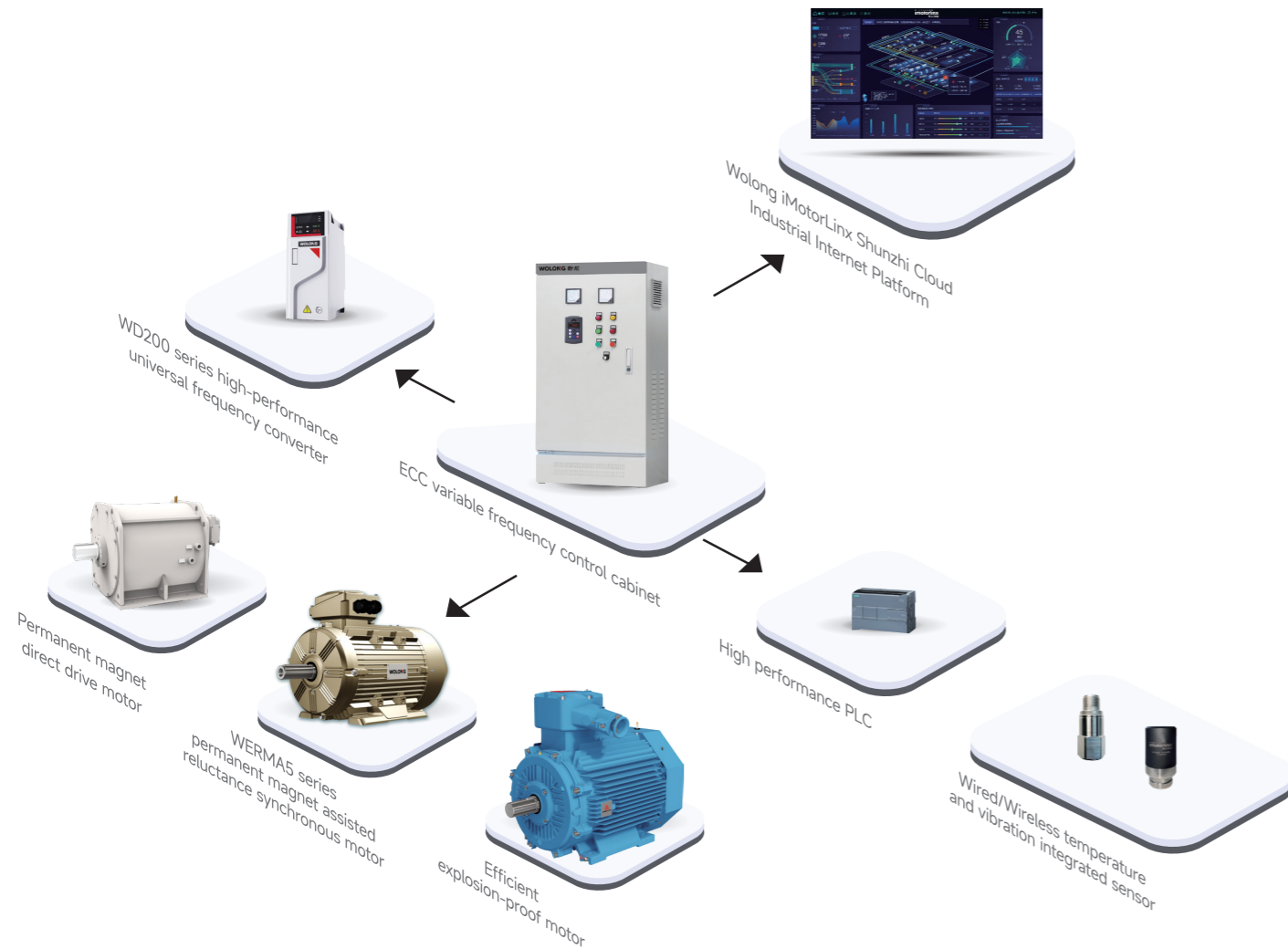
※ The data in this sample may change with technological progress without further notice. Please note the changes in the sample version.

※ The final interpretation right of this sample belongs to Wolong Drive Group Co., Ltd

Wolong Variable Frequency Drive&Digital Service Introduce

Wolong Variable Frequency Drive and Digital Service focuses on high-energy efficient permanent magnet motors and permanent magnet assisted reluctance synchronous motors, providing the most suitable motor drive products for different application scenarios to meet the continuous high performance and efficiency needs of customers on site; Meanwhile it can collect data from motors and drives, upload them to the iMotor industrial internet platform, achieve system remote control, status monitoring, and fault diagnosis, and provide customers with product and technology lifecycle services and preventive maintenance

System topology diagram

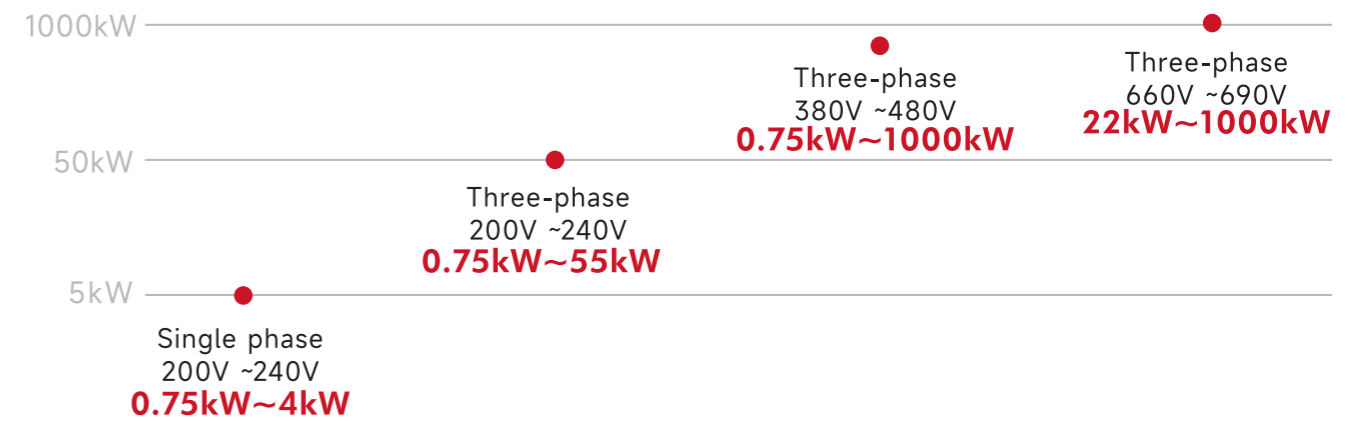


WD200 series high-performance universal frequency converter

The WD200 series high-performance vector frequency converter is the new generation of Wolong frequency converter, which adopts a new motor control algorithm and can be compatible with asynchronous motor, permanent magnet synchronous motor, and synchronous reluctance motor control. It has the characteristics of high reliability, high performance, strong scalability, support for multiple transmissions, and easy cabinet formation.

Comprehensive and universal product

The WD200 covers the powers from 0.75 kW to 1000 kW The product can use four types of power supplies:



The product adopts a narrow body design, making the cabinet assembly more flexible

Save cabinet space and reduce costs; Depending on the model, multiple installation methods are supported:

DIN-Rail mounting
0.75kW~5.5kW

Wall mounted installation
0.75kW~630kW

Flange mounting
75kW~160kW

Floor mounted
220kW~1000kW

Innovative hardware design

The medium and high-power models adopt thyristor rectification, without internal pre charging contactors or mechanical contacts, stable and reliable

Support STO (Safe Torque Interrupt) function to meet the safety design requirements of the equipment

The entire series of products comply with the C3 standard in the EMC product standard (EN61800-3)

Supporting adaptive protection function for bus short circuit can greatly reduce power device damage caused by bus short circuit

Under 80% to 100% load conditions, THDI ≤ 48% can maintain good power factor

Enhanced circuit board coating protection design to meet usage requirements in harsh environments



▼ Wolong Digital Services

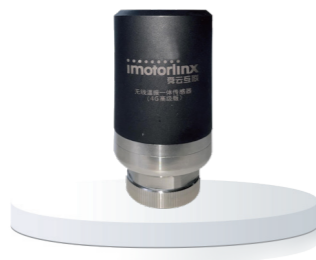
The digital service for motor supporting is composed of two parts, namely the intelligent IoT hardware "Shunzhi Cloud Box" on the edge side and the Shunzhi Cloud Service on the iMotorLinx industrial internet platform.

Shunzhi Cloud Box

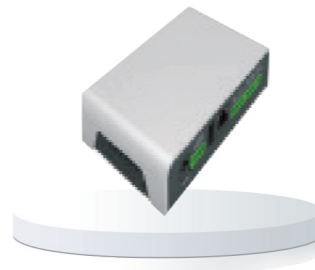
The Shunzhi Cloud Box product family consists of wireless temperature and vibration integrated sensors (basic and advanced versions), wired vibration sensors, multi-functional acquisition controllers (explosion-proof, intrinsic safety, ordinary types), and electrical signal collectors



Wireless temperature and vibration integrated sensor basic version



Wireless temperature and vibration integrated sensor advanced version



Intelligent data collection box



Wired temperature vibration sensor



Multi-functional acquisition intelligent controller intrinsically safe type



Multi-functional acquisition intelligent controller explosion-proof type



Electrical signal collector

iMotor Smart Service

iMotor Smart Service based on imotorlinx industrial internet platforms applies new generation digital technology and AI algorithms formed by top experts in the motor industry, achieving online intelligent monitoring, remoting fault diagnosis, and taking energy efficiency optimization. Combined with closed-loop solutions from offline professional technical teams, it provides users with intelligent services throughout the entire lifecycle of equipment and systems.



Core advantages

High Performance Platform

Highly scalable, reliable and flexible platform with 7 core capabilities including IoT, Big Data, Security, Delivery, Operation, Development, and Algorithms.

Hybrid Cloud Deployment

Powerful cloud computing capabilities, providing hybrid deployment of public and private cloud, zero maintenance, and easy system migrations.

Cross-Scenario Application

Various application scenarios of aftermarket service collaboration including: online monitoring, fault diagnosis, health assessment, inspection, maintenance, repair, tools, spare parts etc. Supports PC, mobile and large screen.

Strong Business Operation

The platform is supported by motor experts and service operation capabilities, forming an integrated aftermarket service solution of online diagnosis + offline O&M services.