

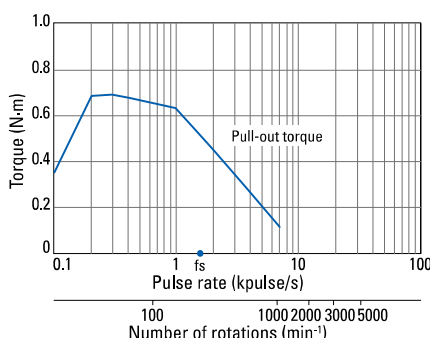
**Bipolar winding, Lead wire type**

Model no.		Holding torque at 2-phase energization	Rated current	Wiring resistance	Winding inductance	Rotor inertia	Mass	Motor length (L)	Shaft diameter (D)
Single shaft	Dual shaft	N·m min.	A/phase	Ω/phase	mH/phase	$\times 10^{-4}$ kg·m <sup>2</sup>	kg	mm	mm
<b>SH1601-5240</b>	<b>SH1601-5210</b>	0.69	2	1.2	3.5	0.24	0.55	42	$\begin{matrix} 0 \\ \phi 6.35 - 0.013 \end{matrix}$
<b>SH1602-5240</b>	<b>SH1602-5210</b>	1.28	2	1.65	6.1	0.4	0.8	54	$\begin{matrix} 0 \\ \phi 6.35 - 0.013 \end{matrix}$
<b>SH1603-5240</b>	<b>SH1603-5210</b>	2.15	2	2.3	8.8	0.75	1.2	76	$\begin{matrix} 0 \\ \phi 8 - 0.015 \end{matrix}$

**Characteristics diagram**

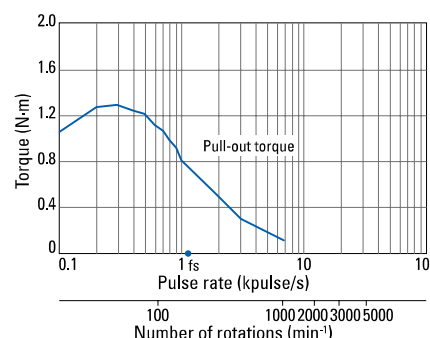
**SH1601-5240  
SH1601-5210**

Constant current circuit  
Source voltage: 24 VDC  
Operating current:  
2 A/phase, 2-phase  
energization (full-step)  
Pull-out torque:  
 $J_r=0.94 \times 10^{-4}$ kg·m<sup>2</sup> (use the  
rubber coupling)  
fs: Maximum self-start  
frequency when not  
loaded



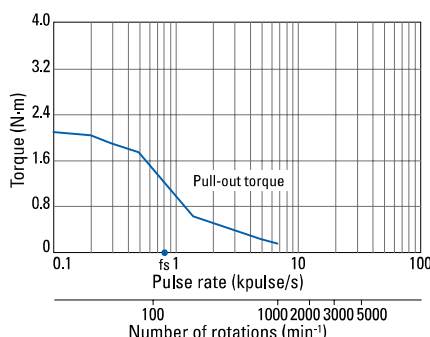
**SH1602-5240  
SH1602-5210**

Constant current circuit  
Source voltage: 24 VDC  
Operating current:  
2 A/phase, 2-phase  
energization (full-step)  
Pull-out torque:  
 $J_r=2.6 \times 10^{-4}$ kg·m<sup>2</sup> (use the  
rubber coupling)  
fs: Maximum self-start  
frequency when not  
loaded

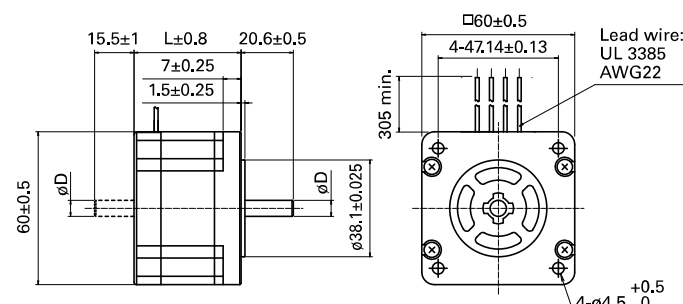


**SH1603-5240  
SH1603-5210**

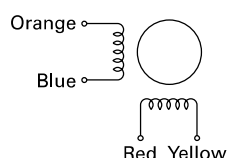
Constant current circuit  
Source voltage: 24 VDC  
Operating current:  
2 A/phase, 2-phase  
energization (full-step)  
Pull-out torque:  
 $J_r=7.4 \times 10^{-4}$ kg·m<sup>2</sup> (use the  
rubber coupling)  
fs: Maximum self-start  
frequency when not  
loaded



**Dimensions (Unit: mm)**



**Internal wiring**



**Compatible drivers**

Model no.: BS1D200P10 (DC input)  
Operating current select switch setting: 0  
*The characteristics diagram shown above is from our experimental circuit.*