

**NTF**

Stainless Hygienic Design

When nothing  
but the **highest**  
**standards matter**



# Stainless Hygienic Design


## Our story

Hygiene and safety standards are high in every industry, especially in the food and pharmaceutical industry. At NTF, we understand this better than most. For nearly 30 years we have been specialists in machine guarding systems and hygienic equipment.

As a result, all our solutions are designed and crafted in either Aisi 304 or Aisi 316 stainless steel – nothing else – providing a durability and a hygienic design that is second to none. Moreover, they come with another huge benefit: Stainless steel is 100% recyclable.

This is what drives us, and every employee across the company: to never compromise on quality or settle for anything less than the best solutions. Utilizing state-of-the-art technology and our long-standing expertise, we match our customer's needs, however unique, detailed or ambitious they are.

This has, of course, everything to do with the close partnerships we have with our customers. We believe that trust and collaboration not only lead to better and more valuable solutions but also – continuously – to setting new standards within safety and work efficiency.



At NTF we offer four product categories.

**NTF Protect**

Stainless safeguarding system – which combines the most stringent hygiene standards with leading performance quality. The smart modularity makes it not only easy to install and adjust on site but also very cost-efficient.

**NTF Process**

Stainless custom-made solutions – adapting wire gratings, baskets, grids and suspension solutions, to meet customer requirements. Which never falls short on requirements for hygiene or cleanability.

**NTF Pure**

Stainless hygienic equipment, specifically designed to meet the needs in hygiene sluices and staff facilities.

**NTF Pharma**

Stainless equipment for sterile environments – a wide range of tailor-made solutions that maximizes safety and offers outstanding durability and service life.

We have come far at NTF. Our story is one of transformation. From strong local blacksmiths to leading specialists and industry partners within food, pharma and other industries. One thing, though, will never change, and this is our enduring commitment to delivering nothing but the best in stainless hygienic design.



**We pride ourselves on delivering the highest quality products to our customers. This commitment to quality starts within - it's in how we work together, build partnerships, and uphold our standards every day.**

- Anders Bjørnstrup, CEO

**We are standard-setting in hygienic standards**

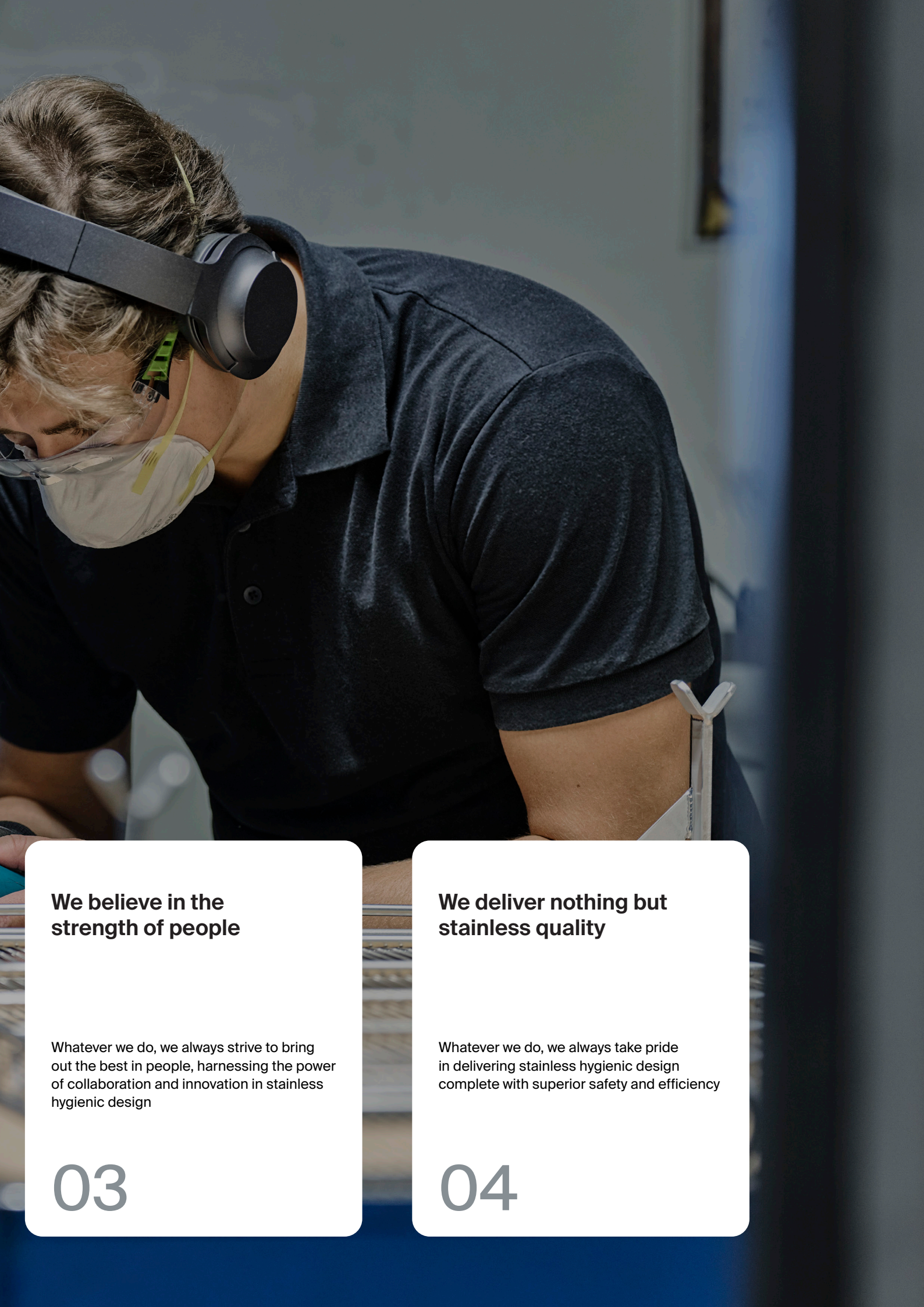
Whatever we do, we always aim to set new standards within stainless hygienic design, driving positive change and lasting impact

01

**We work for safety at work**

Whatever we do, we always have people's safety in mind, dedicated to stainless hygienic design and secure work environments where everyone can thrive

02



### **We believe in the strength of people**

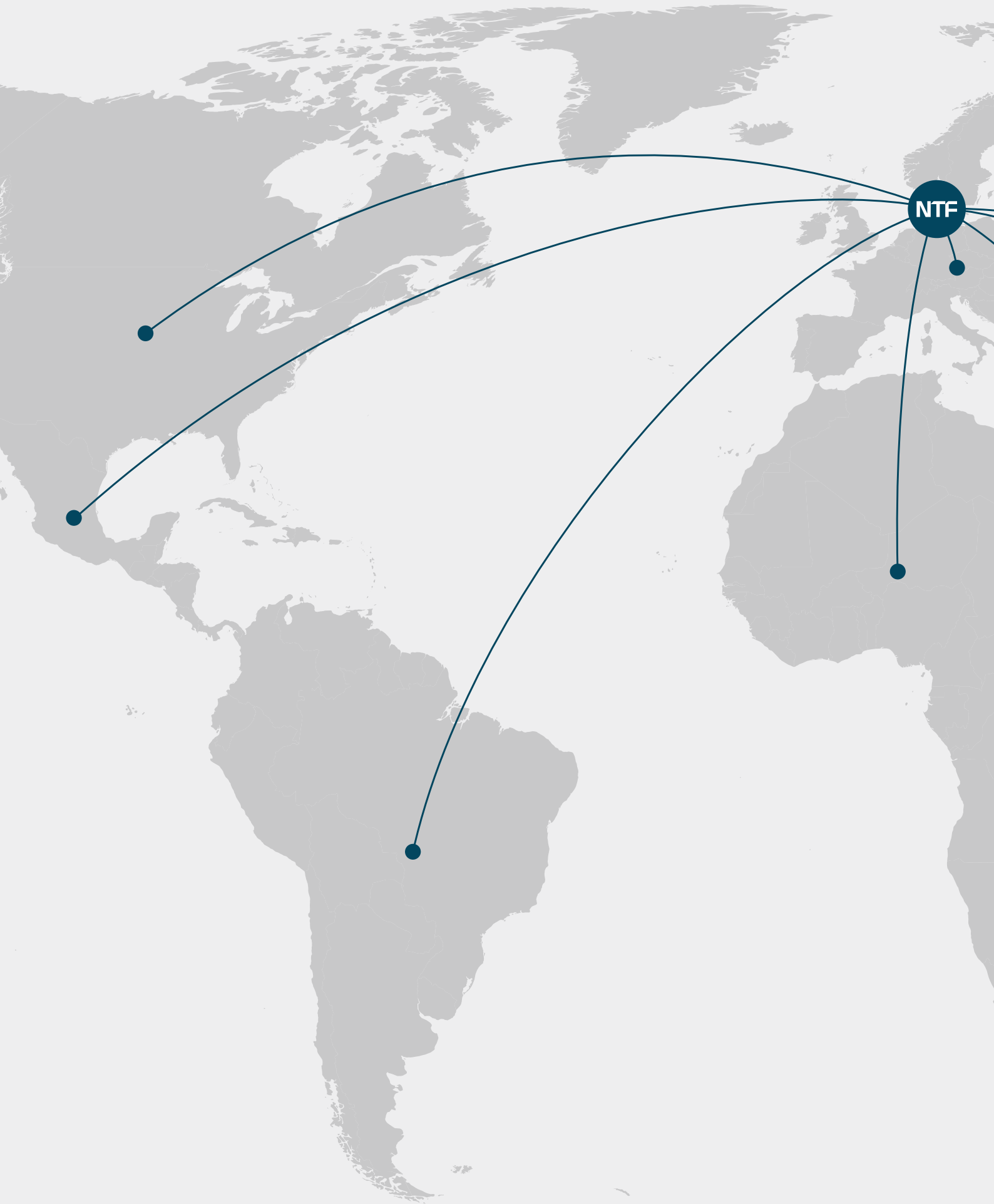
Whatever we do, we always strive to bring out the best in people, harnessing the power of collaboration and innovation in stainless hygienic design

03

### **We deliver nothing but stainless quality**

Whatever we do, we always take pride in delivering stainless hygienic design complete with superior safety and efficiency

04





# Supplying stainless hygienic design across the globe

We are an international company experienced in global markets. We deliver solutions that meet the highest hygiene and safety standards in industries such as food, pharmaceuticals, and chemicals. Our in-depth understanding of European and worldwide regulations ensures that our solutions comply with strict global cleanliness and safety requirements.

With a team of experts well-versed in relevant international standards, we offer consulting services to keep your facility fully aligned with the latest regulations. From design through to implementation, we are equipped to ensure your production meets today's highest hygienic standards.

# The NTF customer journey

For most of our clients, working with NTF is the beginning of a lasting partnership. Whether you engage with one step of our customer journey or go through the whole process, we're here to provide great service and support for your project.

1 →

2 →

3 →

4 →



Website

On our website, you can explore a full overview of our products and services, with easy access to detailed specifications and safety and hygienic standards.



Fence Creator

Our Fence Creator tool allows you to design and customize solutions to fit your specific needs, giving you a clear visual and detailed overview of your project before moving forward.



Professional team

Our dedicated team of specialists are available to assist you at any point in the process, offering expert guidance when designing your project and finding the right solutions. We tailor our services to meet all your specific needs.



Step-File

If you don't already have one, our technical designers can provide a STEP-file to help streamline the process.

5



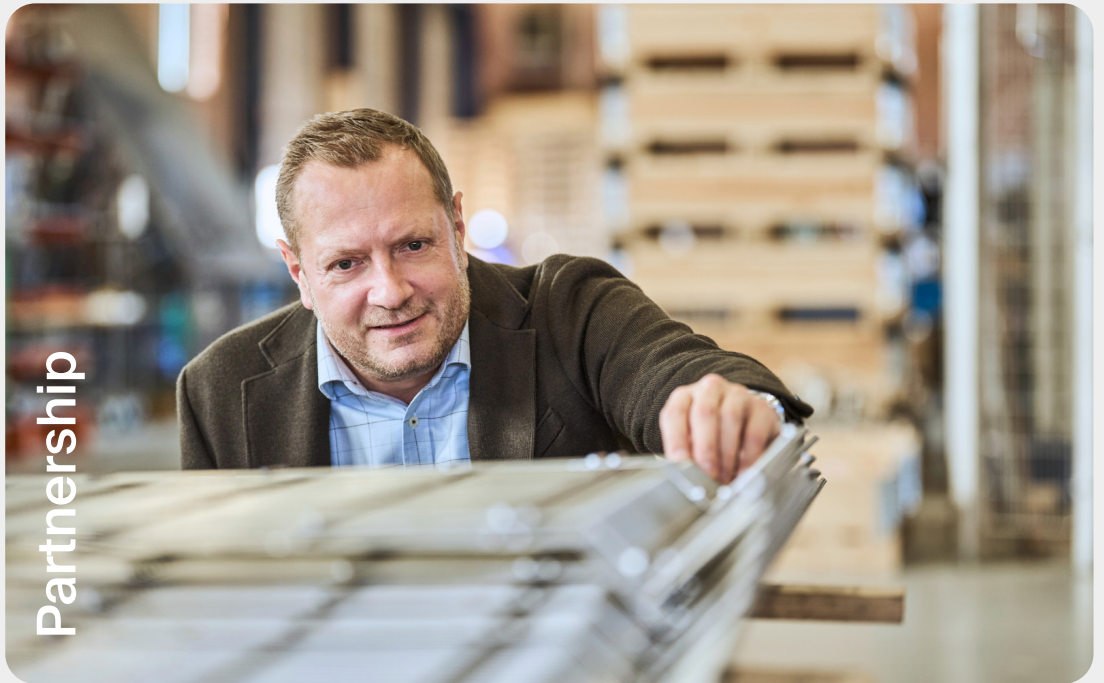
6

## Order



We process your order within 24 hours and begin production right away. We pride ourselves on our efficiency, ensuring every order is delivered on time.

## Partnership



We focus on building long-term partnerships with our customers. Through our partnership program, we provide tailored support to help you achieve sustainable growth, ensuring shared success over time.

# Send us your FenceCreator layout and **we will send you a .STEP file**

Do you have a specifically tight deadline? Send us your FenceCreator machine guarding layout, and we will send you a free corresponding STEP file to add to your production line.

## How it works in **6 simple steps**

01

### Upload your drawing

Design your machine guarding based on the drawing of your production line.

02

### Place fence modules

Just click and drag and Fence-Creator places the modules you need adjusted to size.

03

### Customise your design

Switch between your drawing and a 3D model of your machine guarding. Keep tweaking until you are satisfied.



Start your project now



04

### Quick quote & delivery time

Send your project file to NTF and we will get back to you shortly with your quote and expected delivery time.

05

### Get STEP file

Receive a detailed STEP file made by our experts with complete overview of your project.

06

### Impress. Rejoice. Relax.

Sit back and enjoy your finished product line. It's as simple as that.

Stainless modular machine guards

**NTFP**

rotect

# Comp-line

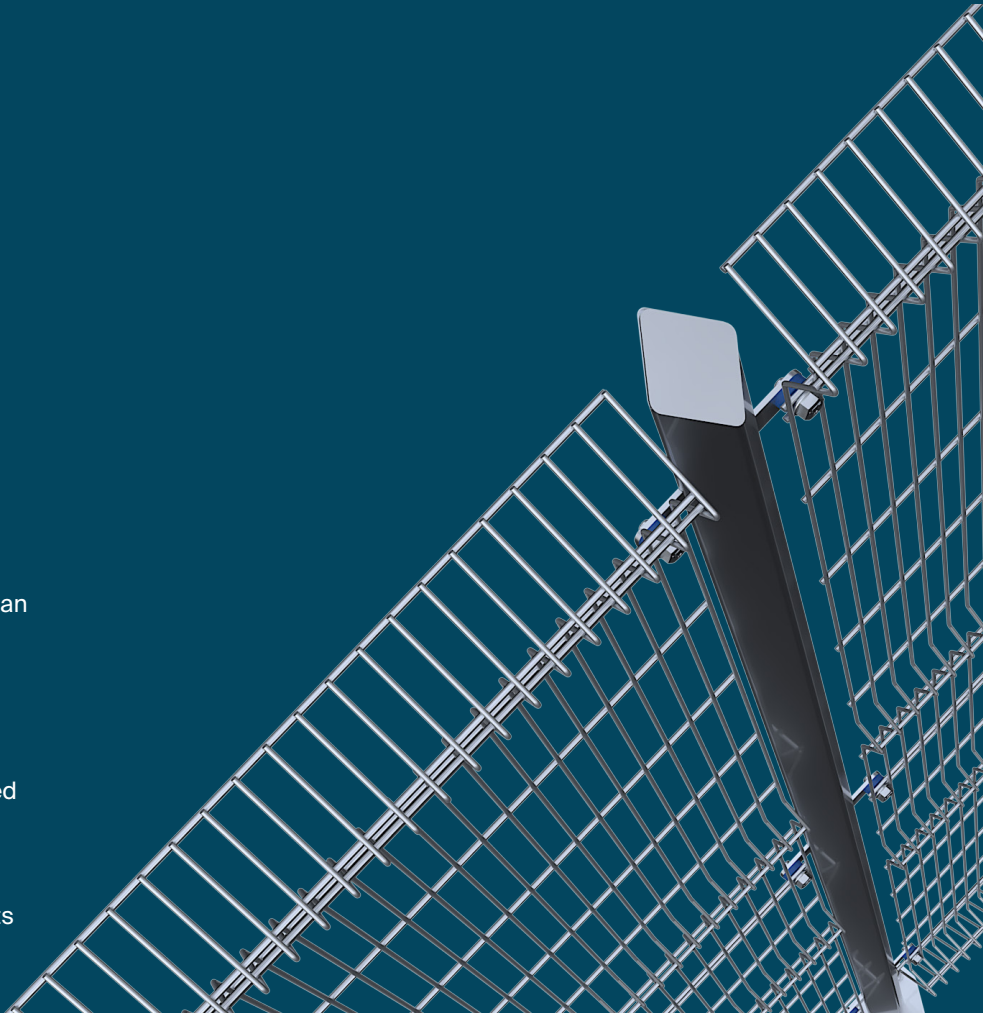
## Hygienic, safe, and customizable

Comp-line is a series of modular machine guards designed to enclose production lines in the food industry. It is a complete stainless steel system that meets all requirements for hygiene, cleanability, and safety.

Comp-line is easy to install, and uniquely it can be adjusted in both height and width on-site according to specific needs.

The flexibility helps ensure that you always get the best possible solution for machine protection and machine guarding customized to your needs.

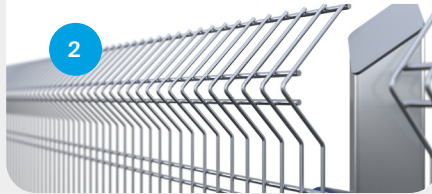
Comp-line is available in AISI 304 and AISI 316, 1. cl. pickled and meets the requirements of DS/EN ISO 13857:2019.



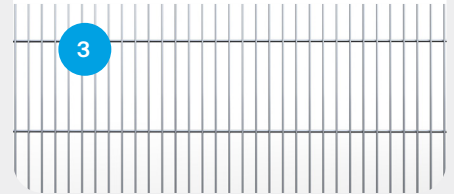
No horizontal surfaces to gather dust or dirt result in hygienic and easy to clean machine guarding.



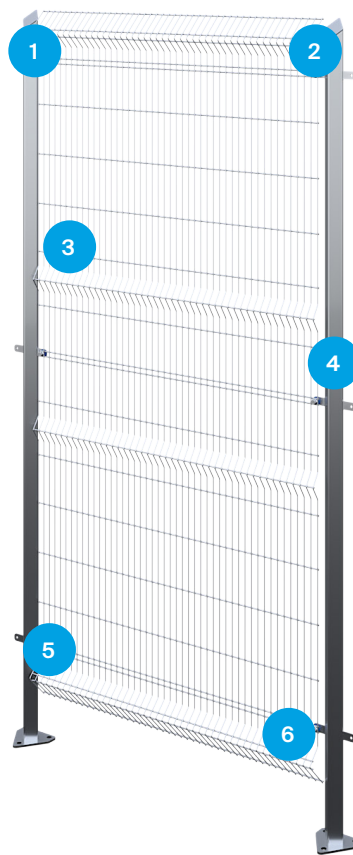
Additional bends across the fence increase the strength of each module and improve safety for productionline workers.



All fence modules are adjustable in width for every 20 mm which makes it possible to adjust the machine guarding precisely on-site.

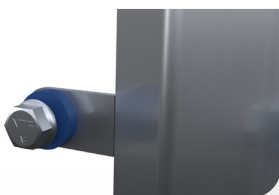


## Comp-line



Achieve full adaptability with bendable brackets that can be adjusted with simple tools on-site during fitting.

4



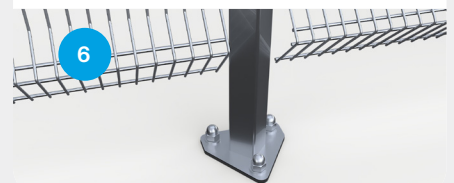
All joints are made with flange bolts and traceable spacers with an easily recognizable blue color to ensure optimal hygienic assembly.

5



Optional threaded rods for raising posts off the floor to increase cleanability as well as compensate for sloping floors in wet environments.

6



# Blue-line Stronger, cleaner, and more adaptable than ever

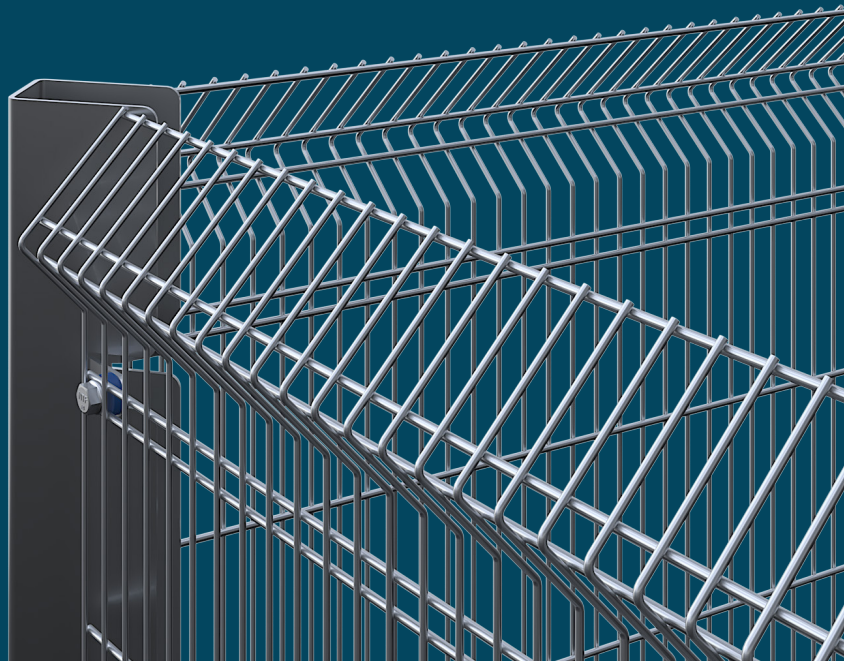
Blue-line is a series of modular machine guards specifically designed for sterile, high-risk zones in the food and pharmaceutical industries. Engineered to ensure optimal hygiene, Blue-Line features open posts and no horizontal surfaces, making it highly cleanable and effective at preventing contamination risks, such as listeria bacteria.

The open posts not only improve hygiene but also provide greater stability, allowing the safety guard to withstand higher impact loads.

On top of this, open posts allow units to be stacked securely, optimizing space and enhancing stability during storage and transport.

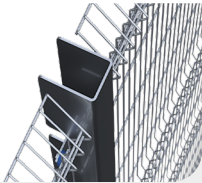
Like Comp-line, Blue-line is easy to install and can be adjusted in both height and width on-site to meet specific requirements.

Blue-line is available in AISI 304 and AISI 316, 1. cl. pickled, and meets the requirements of DS/EN ISO 13857:2019.



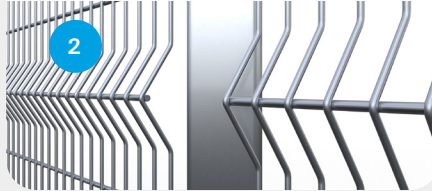
Open post help prevent bacteria accumulation as it has high cleanability. No horizontal surfaces to gather dust or dirt.

1



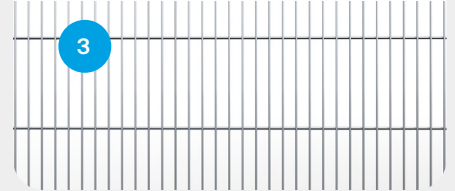
Additional bends across the fence increase the strength of each module and improve safety for productionline workers.

2



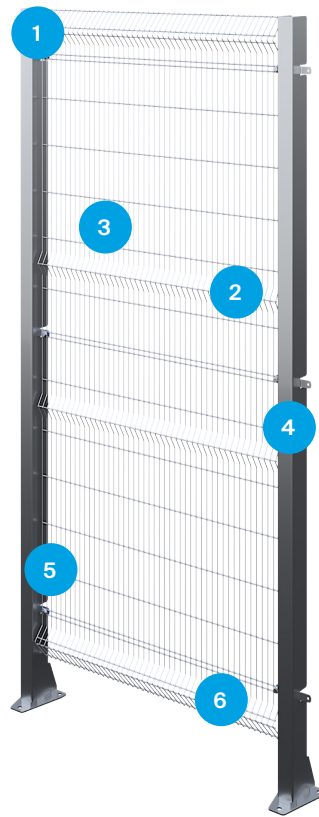
All fence modules are adjustable in width for every 20 mm which makes it possible to adjust the machine guarding precisely on-site.

3



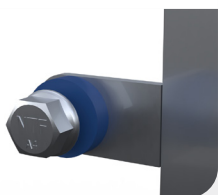
NEW

## Blue-line



Achieve full adaptability with bendable brackets that can be adjusted with simple tools on-site during fitting.

4



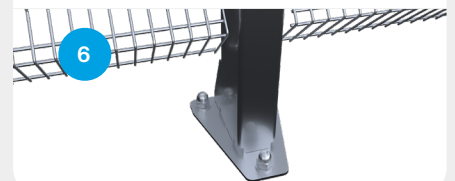
All joints are made with flange bolts and traceable spacers with an easily recognizable blue color to ensure optimal hygienic assembly.

5



The wider foot provides a stronger and more stable foundation. Optional threaded rods for raising posts off the floor to increase cleanability.

6



# Bespoke Solutions

Design Blue-line and Comp-line exactly as you need

With a strong focus on innovation, our team of specialists is ready to provide tailored solutions that meet all customer requirements. Our products are 90% standardized and 10% customizable, ensuring the perfect balance between efficiency and adaptability.

90% standardized  
10% customized

NEW

## Polycarbonate machine guard

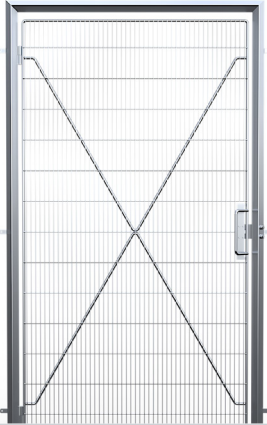
Polycarbonate guards are ideal for industries requiring high hygiene, like food and pharmaceuticals. They meet strict safety standards, withstand frequent wash-downs, resist impact and fluids, and provide clear visibility for safe, efficient operations.



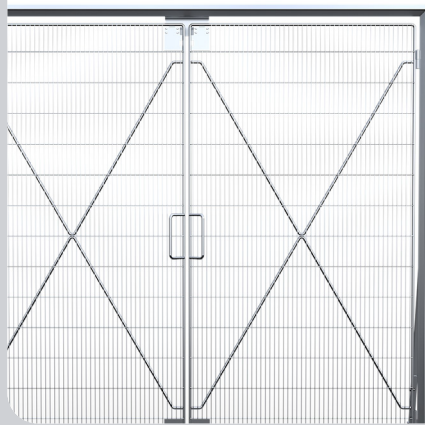
## Door options

We offer a variety of door options to provide tailored security solutions for any business need.

Standard door



Double door



Sliding door



NEW

## Multi-Lock Pro Door

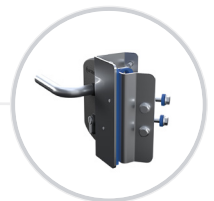
Our new Pro Door is designed for versatility, offering adaptability with three different lock options to meet varied security needs.



Magnet lock kit



Key lock kit



Snap lock kit

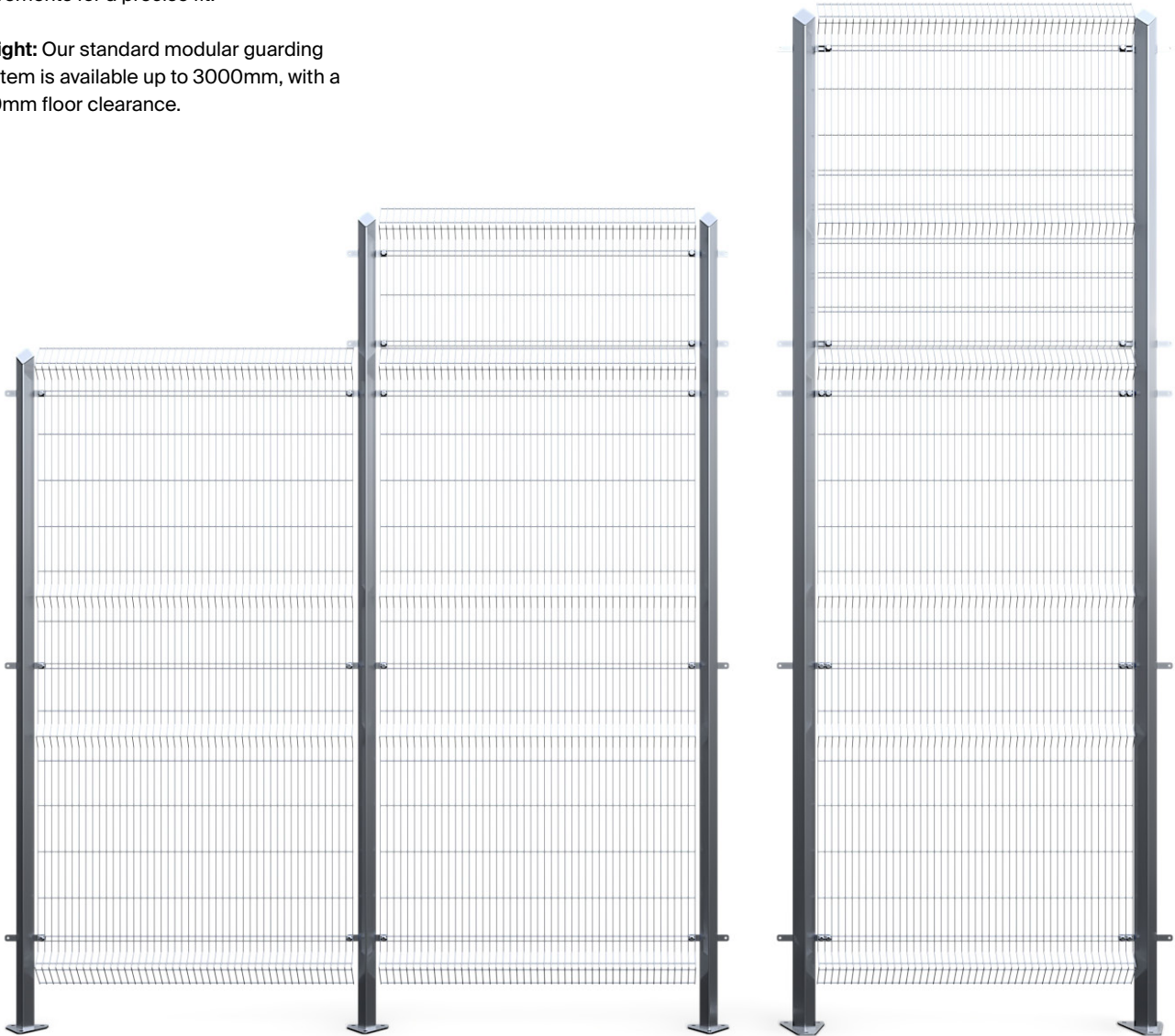


## Market leading height and width

Our modular guarding systems offers flexible height and width options, designed for efficiency and a clean, streamlined look. With market-leading module widths up to 2000mm and post heights up to 3000mm, you can reduce the number of posts required, resulting in quicker installation, improved aesthetics, and cost savings.

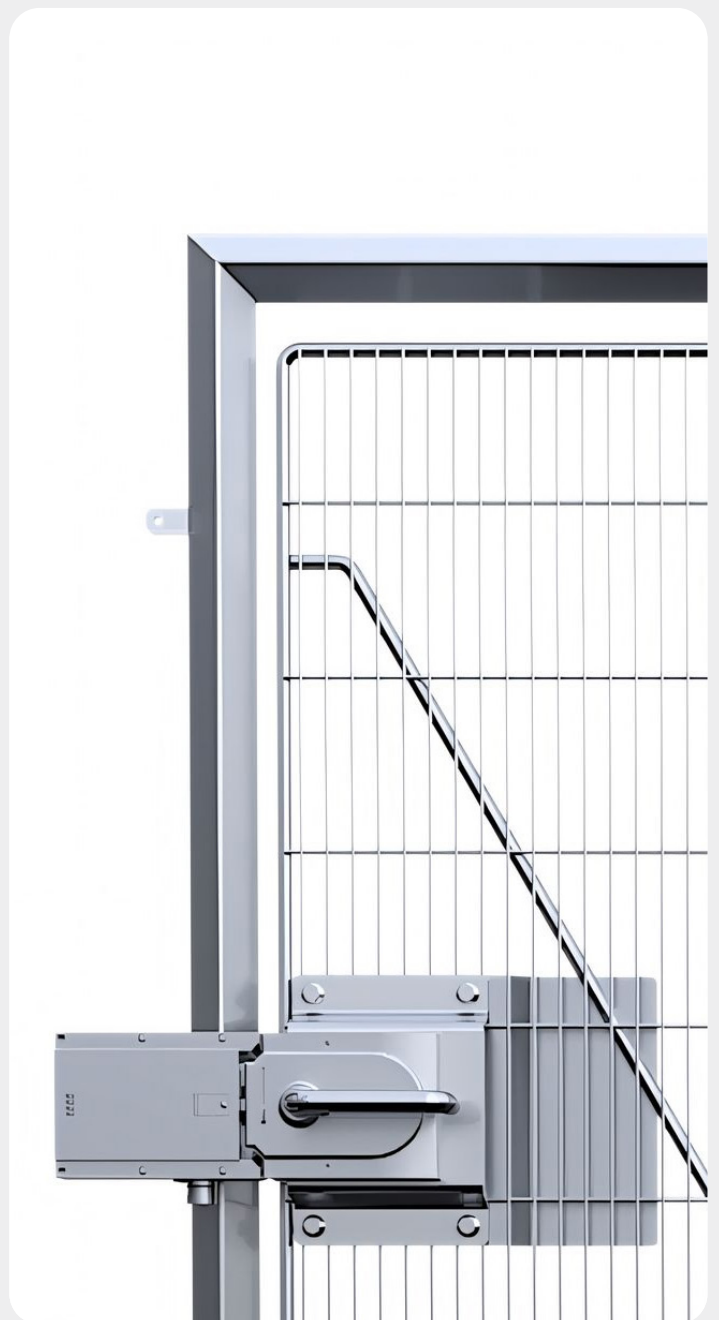
**Width:** Choose from standard widths of 1000mm or 2000mm, adjustable in 20mm increments for a precise fit.

**Height:** Our standard modular guarding system is available up to 3000mm, with a 130mm floor clearance.



**Want extra safety?**  
**Explore our bracket**  
**kit options**

We offer standard bracket kits, as well as customized options to match your specific needs, providing added security and support for any project.



# In-line Hygienic machine guarding directly on the machine

In-Line is hygienic machine guarding mounted directly on the machine, designed according to current requirements for finger, hand and arm protection.

We provide complete stainless steel solutions customized to fit specific needs. All solutions are designed with a focus on safety, hygiene, and easy cleaning. They can be mounted directly on the machine or on existing shielding for optimal protection.

In-line is available in **AISI 304** and AISI 316, 1. cl. pickled and meets the requirements of DS/EN ISO 13857:2019.





### In-line benefits

01

Complete stainless steel solution

02

Easy to mount

03

Short delivery time

04

Available in all sizes and adaptable with bends, cuts, and fittings

05

Meets the food industry's high requirements for hygiene and safety

06

Constructed to meet requirements for finger, hand, and arm protection

Stainless hygienic equipment

**NTF**

Pure

# Hygienic changing area

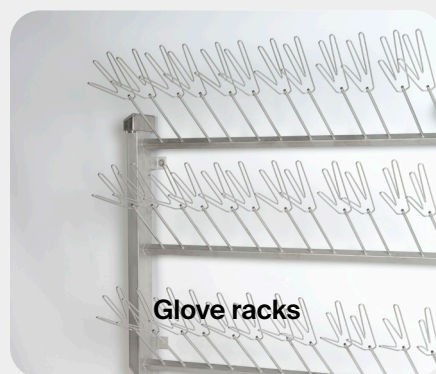
In this category, we offer specialized accessories for personnel changing rooms and hygienic storage of work attire. As with our other product lines, we emphasize functional design and ease of cleaning.

We provide technical guidance to tailor our solutions to your existing space. With extensive experience in creating suspension systems for production tools, we also offer 2D interior design proposals for sanitary entryways and changing facilities.

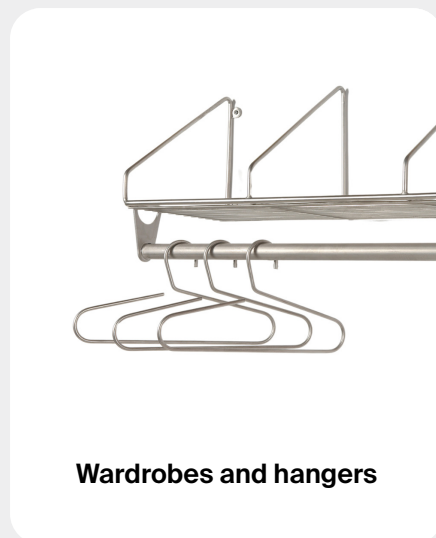


## Let us design your next **hygienic** changing area

We offer a wide range of stainless steel products with a hygienic design. Our selection includes solutions for hanging and drying work attire, such as coats, aprons, helmets, gloves, shoes, boots, and more.



**Standard or custom**  
- the choice is yours



# Hygienic sluice entry areas

We specialize in designing customized hygienic sluice entry areas that prioritize cleanliness, featuring integrated hand sanitizers, sole washers, and access controls. Our hygienically designed disinfecting stations make it easy to clean and disinfect hands and work boots, reducing microbial growth and ensuring a sanitary environment.

Our stainless steel products are ideal for facilities in food production, healthcare, and pharmaceuticals.

We provide detailed 2D design proposals that are adapted to our client's space.

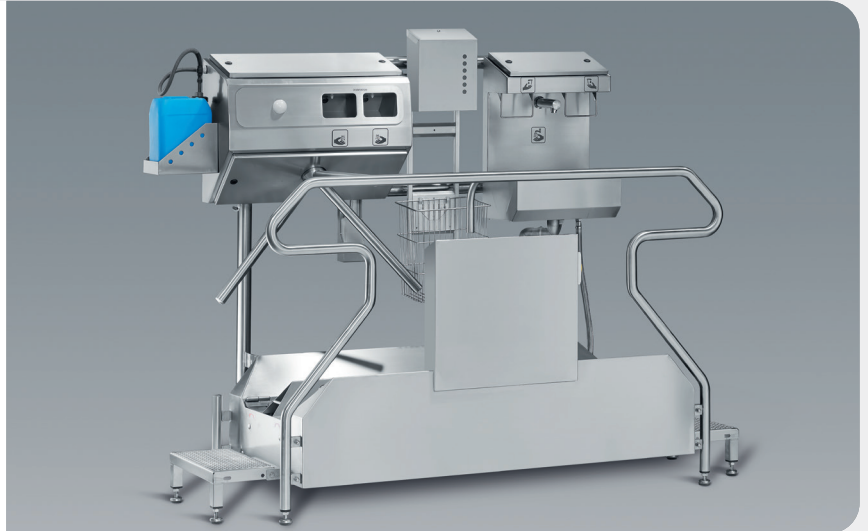


# Hygienic entry solutions **made easy**

Prevent contamination in hygiene-sensitive production areas with products designed to block viruses, bacteria, and germs carried by humans.

## Choose a complete hygiene station

Choose from ready-made hygiene sluices that come fully equipped with all essential components, ensuring safe and sanitary entry into production areas.



Or create your own custom setup to fit your specific hygiene needs



We know how important hygiene is. That's why our products guide you through every step.

1

Soap

2

Wash hands

3

Dry

4

Disinfection

5

Boots disinfection

6

Guard

**We are ready to help**



Sales Consultant  
- internal Sales

Rikke Olesen

+45 41 91 86 89  
tm@ntf.dk



Sales Consultant -  
internal Sales

Søren Michno

+45 41 91 86 83  
tm@ntf.dk

Stainless custom made solutions

**NTF Pr**

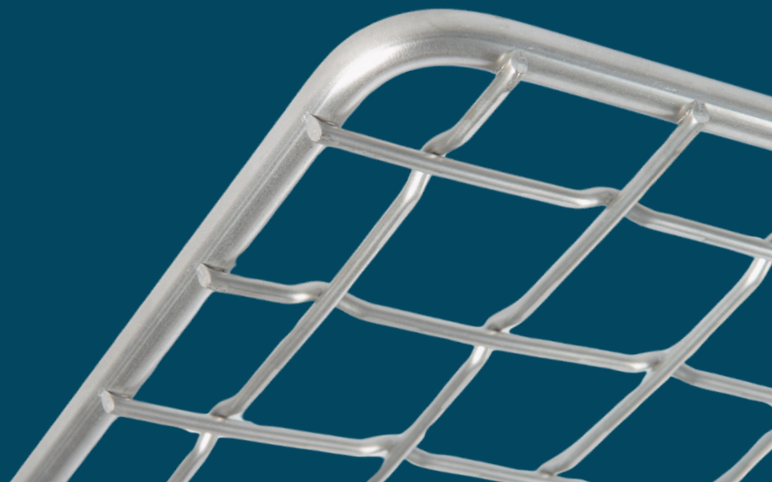
rocess

# Process equipment in hygienic design

NTF specializes in the manufacture of easy-to-clean process equipment in wire gratings, wire baskets, processing grids, shelf trolleys, smoke trucks and suspension solutions developed for smoking, cooking, pasteurization, freezing, thawing, etc. in the food industry.

The mesh type, wire thickness and mesh spacing will be adapted to the final product, as it depends on the specific use and load of the product. Frames and stiffeners are also adapted to the load.

All process equipment is available in AISI 304 and AISI 316, 1. cl. pickled and meets the requirements of DS/EN ISO 13857:2019.

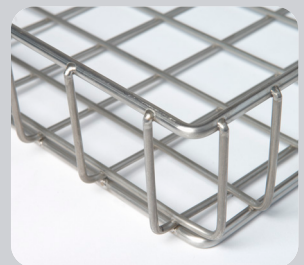
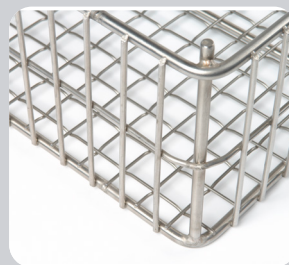


**NTF is a supplier to the world's leading smoking oven manufacturers and manufacturers of boiling units**

**Stainless steel wire gratings**



**Stainless steel wire baskets**



**Stainless steel shelf trolleys**



**Stainless steel meat hooks and smoke sticks**



Stainless equipment for sterile environments

**NTF PI**

harmma

# Pharma solutions that meet the highest standards

NTF Pharma is our dedicated product line for the pharmaceutical industry, designed to uphold the highest standards of clinical hygiene.

Each solution is flexible and customizable to meet the specific demands of pharmaceutical applications.

NTF Pharma products are crafted from acid-resistant AISI 316 or AISI 304 and feature electropolished and pickled surfaces.



**NTF Pharma products are crafted from acid-resistant AISI 316 or AISI 304 and feature electro-polished and pickled surfaces**

These finishing techniques create ultra-smooth surfaces that resist bacterial growth.



**Precision-driven,  
customized solutions**

Pharma products are the most specialized and high-end offerings in our portfolio. We know that errors in this industry can be costly, so we offer personalized consultation to ensure each solution fits specific needs. Our commitment is to act not just as a supplier, but as a trusted partner, dedicated to achieving the highest quality in every project.



**Trusted by industry leaders**





30 year an



# Anniversary

This year marks a significant milestone for us at NTF: we are celebrating 30 years of innovation, dedication, and growth. Over the last three decades, we have built a reputation as a trusted partner in delivering safety to your workspace and high-quality, hygienic designed solutions in stainless steel - and we continue to set even higher standards.

As we celebrate our 30th anniversary, we are proud to honor this legacy by stepping into a new era with a complete rebranding and a sharpened vision for the future. In the coming year, we will re-introduce our products in four distinct product lines: NTF Protect, NTF Pure, NTF Process, and NTF Pharma. Alongside a new logo, redesigned website, and modernized brand identity, these product areas represent our specialized solutions across multiple industries.

## Quality, sustainability, and partnership

With a presence in 33 countries and growing, we are expanding our reach to deliver industry-leading solutions worldwide. Our newly established R&D department is dedicated to developing new products that meet the highest hygiene standards in the industry.

As ESG reporting becomes essential across industries, we are actively building our processes to meet these demands. We are committed to gathering and reporting relevant data, allowing us to provide the transparency our partners expect from us.

At NTF, we see ourselves as partners, fully invested in our clients' success. As we look to the future, we are excited to continue setting new standards in quality and service, building on our legacy for the next 30 years.

**NTF**

# Together, lets shape whats next

**Office adress**  
Hagensvej 17  
DK-9530 Støvring

**Contact**  
mail@ntf.dk  
+45 98 37 37 66

Scan to visit [our website](#)

- Or go to [ntf.dk/en/](#) and read more



**For enquiries**

Technical Manager

**Thomas Moust**

+45 41 91 86 87  
tm@ntf.dk

Sales Consultant - internal Sales

**Søren Michno**

+45 41 91 86 83  
sm@ntf.dk

Sales Consultant - internal Sales

**Rikke Olesen**

+45 41 91 86 89  
rvo@ntf.dk

CEO

**Anders Bjørnstrup Bech**

+45 30 21 44 61  
abb@ntf.dk