

# Motore N805 IP55 - N806 IP66

## Motor N805 IP55 - N806 IP66

**S2-S3** SERVIZIO INTERMITTENTE  
INTERMITTENT DUTY **0,55-2,2kW**

Motori C.C. a norme CEI ed IEC - magnete permanente - 4 poli  
D.C. motors CEI and IEC standards - permanent magnet - 4 poles

Alimentazione da batteria - tensione nominale 12/24/48V  
Battery supply - rated voltage 12/24/48V

Fattore di forma 1 - isolamento classe F / H - senza ventilazione  
Form factor 1 - insulation F / H class - without ventilation

N805 protezione IP55 - N806 protezione IP66  
N805 protection IP55 - N806 protection IP66

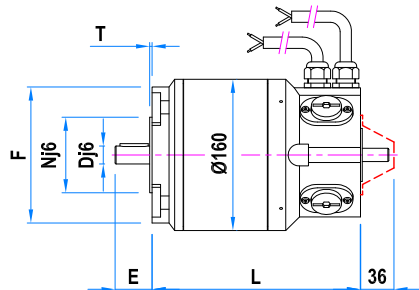
N805 uscita cavi o scatola morsetti - N806 solo uscita cavi senza albero posteriore  
N805 free cables or terminal box - N806 only free cables without back shaft



Tipo Type	Potenza Power	Tensione/Corrente Voltage/Current	Velocità Speed	Coppia Torque	Potenza Power	Tensione/Corrente Voltage/Current	Velocità Speed	Coppia Torque	Potenza Power	Tensione/Corrente Voltage/Current	Velocità Speed	Coppia Torque
N805.19	0,55 kW	12 V - 55 A	1500 rpm	3,5 Nm	0,75 kW	12 V - 75 A	2200 rpm	3,3 Nm	1,1 kW	12 V - 110 A	3000 rpm	3,5 Nm
		24 V - 27 A				24 V - 37 A				24 V - 55 A		
N806.19		48 V - 14 A				48 V - 19 A				48 V - 27 A		
N805.27	0,75 kW	12 V - 75 A	1500 rpm	4,8 Nm	1 kW	12 V - 100 A	2000 rpm	4,8 Nm	1,1 kW	12 V - 110 A	3000 rpm	3,5 Nm
		24 V - 37 A				24 V - 50 A				24 V - 75 A		
N806.27		48 V - 19 A				48 V - 25 A				48 V - 37 A		4,8 Nm
N805.38	1,1 kW	12 V - 110 A	1500 rpm	7 Nm	1,1 kW	12 V - 110 A	2200 rpm	4,8 Nm	---	---	3000 rpm	---
		24 V - 55 A				24 V - 75 A				24 V - 110 A		
N806.38		48 V - 27 A			1,5 kW	48 V - 37 A		6,5 Nm	2,2 kW	48 V - 55 A		7 Nm

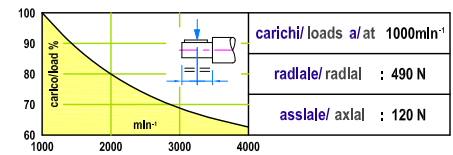
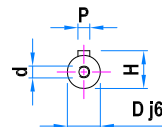
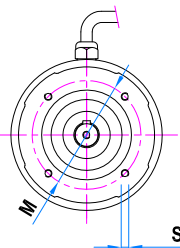
Tolleranza / Tolerance ±10%

Max. 1,1 kW a / at 12 V Max. 2,2 kW a / at 24 V



80 B14

90 B14



Alberi / Shafts

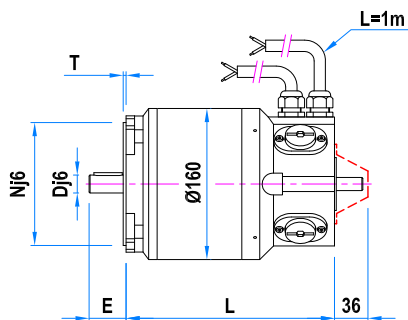
D	E	P	H	d
Ø19	40	6x6x30	21.5	M6
Ø24	50	8x7x35	27	M8

Flange B5 / Flanges B5

F	N	M	T	S
Ø185	Ø130	Ø165	3	10.5

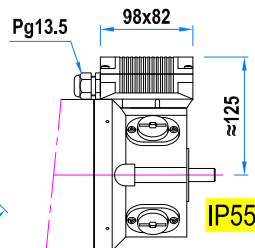
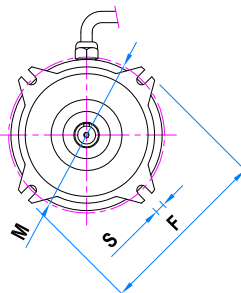
Flange B14 / Flanges B14

F	N	M	T	S
Ø120	Ø80	Ø100	2.5	M6
Ø140	Ø95	Ø115	3	M8

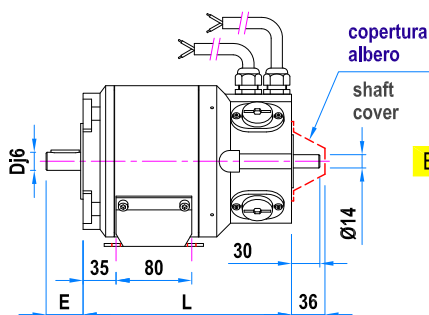


80 B5

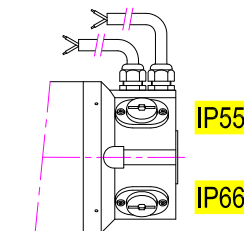
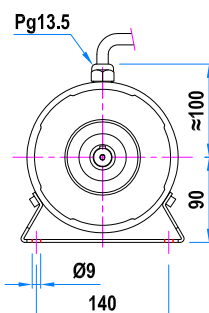
90 B5



Morsetti / Terminal box



B3



Uscita cavi / Free cables

Tipo / Type	L	Peso / Weight
N805.19 N806.19	222	12 Kg
N805.27 N806.27	252	15 Kg
N805.38 N806.38	277	18.5 Kg