

Motore N745 IP54 - N746 IP66

Motor N745 IP54 - N746 IP66

S1 SERVIZIO CONTINUO
CONTINUOUS DUTY **0,3-1,3kW**

Motori C.C. a norme CEI ed IEC - magnete permanente - 4 poli
D.C. motors CEI and IEC standards - permanent magnet - 4 poles

Alimentazione da batteria - tensione nominale 12/24/48V
Battery supply - rated voltage 12/24/48V

Fattore di forma 1 - senza ventilazione
Form factor 1 - no ventilated

N745 protezione IP54 - N746 protezione IP66 - isolamento classe F / H
N745 protection IP54 - N746 protection IP66 - insulation F / H class

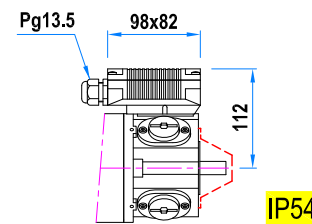
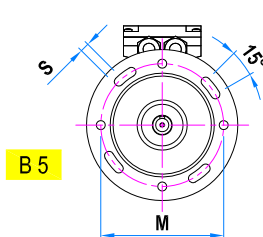
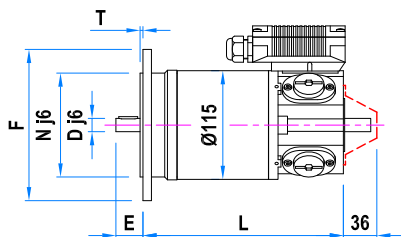
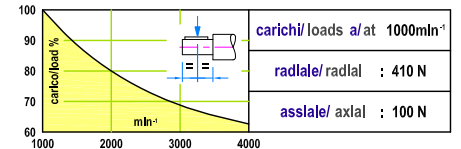
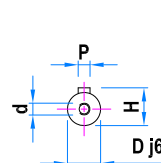
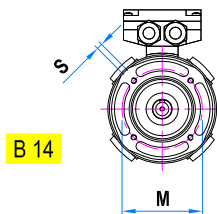
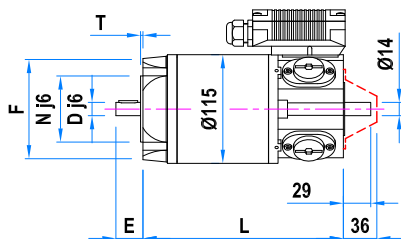
N745 scatola morsetti o uscita cavo - N746 solo uscita cavo senza albero posteriore
N745 terminal box or free cable - N746 only free cable without back shaft



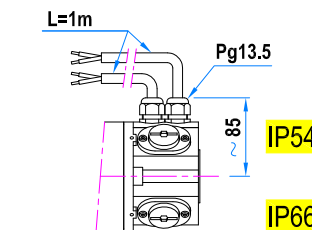
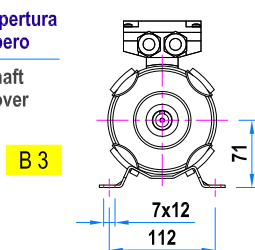
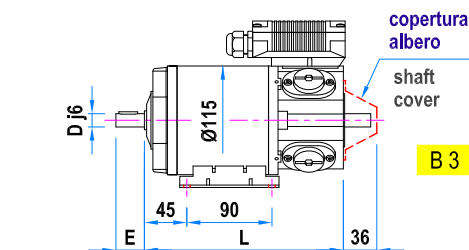
Tipo / Type	1500min ⁻¹			2000min ⁻¹			3000min ⁻¹				
N745.6 N746.6	0,3 kW	12 V - 32 A	2 Nm	0,4 kW	12 V - 43 A	2 Nm	0,55 kW	12 V - 59 A	1,8 Nm		
		24 V - 16 A						24 V - 21,5 A			24 V - 29,5 A
		48 V - 8 A						48 V - 10,7 A			48 V - 14,7 A
N745.9 N746.9	0,4 kW	12 V - 43 A	2,7 Nm	0,55 kW	12 V - 59 A	2,7 Nm	0,75 kW	12 V - 80 A	2,4 Nm		
		24 V - 21,5 A						24 V - 29,5 A			24 V - 40 A
		48 V - 10,7 A						48 V - 14,7 A			48 V - 20 A
N745.12 N746.12	0,55 kW	12 V - 59 A	3,6 Nm	0,75 kW	12 V - 80 A	3,6 Nm	0,75 kW	12 V - 80 A	2,4 Nm		
		24 V - 29,5 A						24 V - 40 A			24 V - 53,5 A
		48 V - 14,7 A						48 V - 20 A			48 V - 26,7 A
N745.18	0,75 kW	12 V - 80 A	4,8 Nm	0,75 kW	12 V - 80 A	3,6 Nm	--	--	--		
N746.18	0,8 kW	24 V - 43 A	5,1 Nm	1,05 kW	24 V - 56 A	5,1 Nm	1,3 kW	24 V - 70 A	4,2 Nm		
		48 V - 21,5 A						48 V - 28 A			48 V - 34,7 A

Tolleranza / Tolerance ±10%

Max. 0,75 kW a / at 12 V Max. 1,3 kW a / at 24 V



Morsettiera / Terminal box



Uscita cavo / Free cable

Alberi / Shafts				
D	E	P	H	d
Ø14	30	5x5x20	16	M5
Ø19	40	6x6x30	21.5	M6

Flange B14 / Flanges B14				
F	N	M	T	S
Ø105	Ø70	Ø85	2,5	M6
Ø120	Ø80	Ø100	2,5	M6

Flange B5 / Flanges B5				
F	N	M	T	S
Ø160	Ø110	Ø130	3	Ø9.5
Ø200	Ø130	Ø165	3	Ø11

Tipo / Type	L	Peso / Weight
N745.6 N746.6	214	7.7 Kg
N745.9 N746.9	247	9.7 Kg
N745.12 N746.12	277	11.7 Kg
N745.18 N746.18	337	15.7 Kg