

Motore LN70 IP54 o IP66

Motor LN70 IP54 or IP66

S1 SERVIZIO CONTINUO
CONTINUOUS DUTY **160-760W**

Motori C.C. a norme CEI ed IEC - magnete permanente - 4 poli
D.C. motors CEI and IEC standards - permanent magnet - 4 poles

Alimentazione da batteria - tensione nominale 12/24/48V
Battery supply - rated voltage 12/24/48V

Fattore di forma 1 - senza ventilazione
Form factor 1 - no ventilated

Isolamento classe F / H - protezione IP54 (a richiesta IP66)
Insulation F / H class - protection IP54 (IP66 on request)

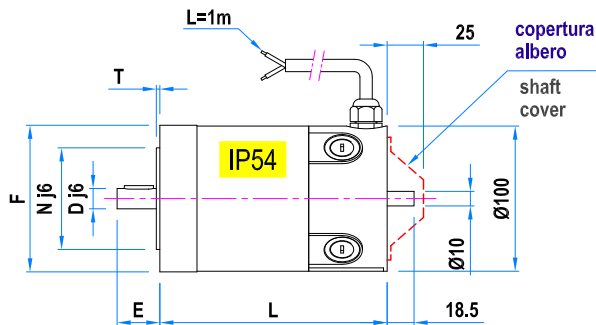
Uscita cavo
Free cable



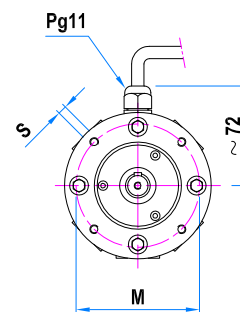
Tipo / Type	1500min ⁻¹			2000min ⁻¹			3000min ⁻¹		
LN70.5	160 W	12 V - 17 A	1 Nm	215 W	12 V - 22 A	1 Nm	320 W	12 V - 34 A	1 Nm
		24 V - 8.5 A			24 V - 11 A			24 V - 17 A	
		48 V - 4.2 A			48 V - 5.5 A			48 V - 8.5 A	
LN70.10	270 W	12 V - 28 A	1.7 Nm	360 W	12 V - 38 A	1.7 Nm	400 W	12 V - 41 A	1.2 Nm
		24 V - 14 A			24 V - 19 A		24 V - 28 A	1.7 Nm	
		48 V - 7 A			48 V - 9.5 A		48 V - 14 A		
LN70.15	380 W	12 V - 40 A	2.4 Nm	380 W	12 V - 40 A	1.8 Nm	--	--	--
		24 V - 20 A		500 W	24 V - 26 A		24 V - 40 A	2.4 Nm	
		48 V - 10 A			48 V - 13 A		48 V - 20 A	2.4 Nm	

Tolleranza / Tolerance ±10%

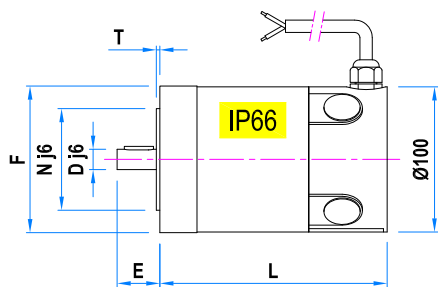
Max. 400 W a / at 12 V



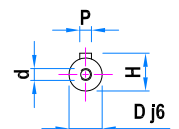
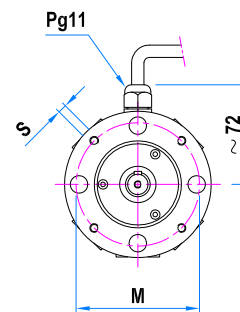
B 14



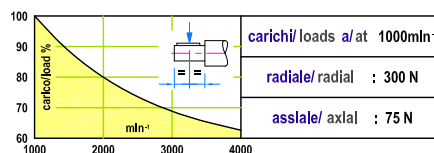
Flange B14 / Flanges B14				
F	N	M	T	S
Ø90	Ø60	Ø75	2	M5
Ø105	Ø70	Ø85	2.5	M6



B 14



Tipo / Type	L	Peso / Weight
LN70.5	156.5	4.2 Kg
LN70.10	206.5	6.2 Kg
LN70.15	256.5	8.3 Kg



Alberi / Shafts				
D	E	P	H	d
Ø11	23	4x4x15	12.5	M4
Ø14	30	5x5x20	16	M5