

Staf 06 Pos. M Insert Screw

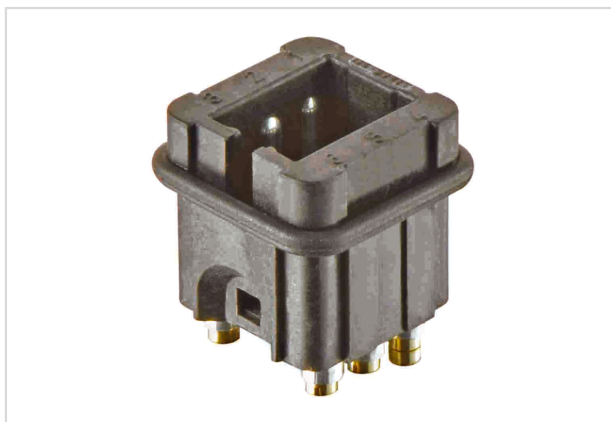


Image is for illustration purposes only. Please refer to product description.

Part number	09 70 006 2616
Specification	Staf 06 Pos. M Insert Screw
HARTING eCatalogue	https://b2b.harting.com/09700062616

Identification

Category	Inserts
Series	Staf®

Version

Termination method	Screw termination
Gender	Male
Size	3 A
Number of contacts	6

Technical characteristics

Conductor cross-section	1.5 mm ²
Rated current	10 A
Rated voltage	25 V
Rated voltage	25 V AC 60 V DC
Rated impulse voltage	0.8 kV
Pollution degree	3
Rated voltage acc. to UL	50 V
Rated voltage acc. to CSA	50 V
Insulation resistance	>10 ¹⁰ Ω
Contact resistance	≤2 mΩ
Tightening torque	0.25 Nm
Limiting temperature	-40 ... +100 °C



Pushing Performance
Since 1945

Technical characteristics

Mating cycles	≥500
---------------	------

Material properties

Material (insert)	Polyamide (PA)
Colour (insert)	Black
Material (contacts)	Copper alloy
Surface (contacts)	Silver plated
Material flammability class acc. to UL 94	HB
RoHS	compliant with exemption
RoHS exemptions	6(c): Copper alloy containing up to 4 % lead by weight
ELV status	compliant with exemption
China RoHS	50
REACH Annex XVII substances	Not contained
REACH ANNEX XIV substances	Not contained
REACH SVHC substances	Yes
REACH SVHC substances	Lead
California Proposition 65 substances	Yes
California Proposition 65 substances	Lead Nickel Naphthalene

Specifications and approvals

Specifications	EN 60664-1 IEC 61984
UL / CSA	UL 1977 ECBT2.E235076

Commercial data

Packaging size	10
Net weight	17.9 g
Country of origin	Romania
European customs tariff number	85366990
eCl@ss	27440205 Contact insert for industrial connectors