

## WIRESSENSOR C120

4C1.0600.6832.3113

Wiresensor C120, 6000mm, Profibus

- Målelengde 0-6m
- -20° til +90°C
- IP54
- Analog, EtherNet/IP, CANopen, EtherCAT og mm.
- Titananodisert aluminiumshus



### PRODUKTBESKRIVELSE

Kübler wiresensor er designet for krevende bruksområder. For eksempel innenfor segmentet maskinbygging. Systemene er robust bygget med aluminiumshus for å tåle tøffe miljøer. De tolererer høy hastighet og har lang levetid. C120-serien er tilgjengelig med analoge, inkrementelle eller absolutte (SSI / BiSS, CANopen, Profibus, EtherCAT, Profinet eller DeviceNet) utganger.

CE-godkjenning: EN 61000-6-2, EN 61000-6-3

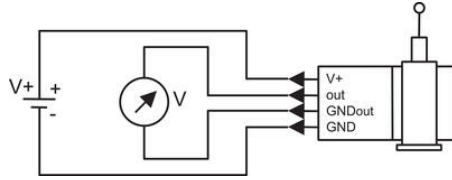
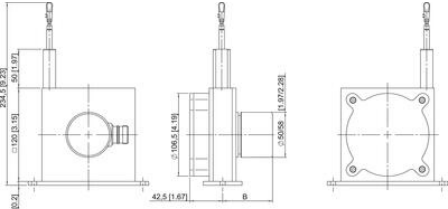
ROHS godkjenning: EUs retningslinje 2002/95 / EF

Disse produktene kan tilpasses din applikasjon. Vi har kun listet noen mulige varianter. Ta kontakt for pris og leveringstid for din løsning.

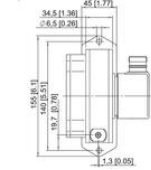
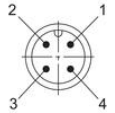
### TEKNISKE DATA

<b>Acceleration Max</b>	140 m/s
<b>Extension Force Max</b>	12,3
<b>Extension Force My</b>	8,8
<b>Hastighet maks.</b>	10 m/s
<b>IP-klasse</b>	IP65
<b>Linearity Angle Sensor</b>	0.05%
<b>Material Wire</b>	Rustfritt stål
<b>Materiale giverhus</b>	Anodisert aluminium
<b>Matespenning DC maks.</b>	30 V DC
<b>Matespenning DC min.</b>	12 V DC
<b>Måleområde</b>	0-6000mm

<b>Polaritetsbeskyttelse</b>	Ja
<b>Temperaturområde fra</b>	-20 °C
<b>Temperaturområde til</b>	60 °C
<b>Vekt</b>	1600 g

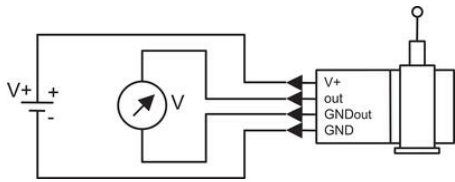
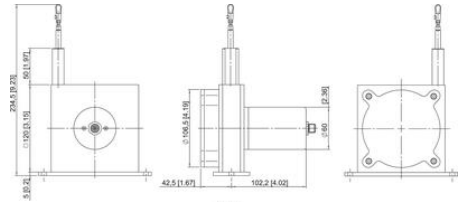
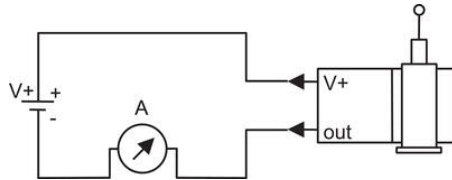
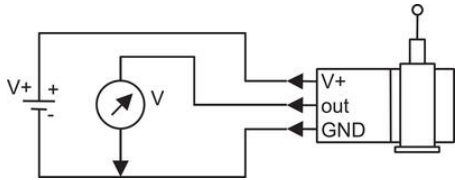


Pin	1	2	3	4
Cable colour	brown	white	blue	black
0...10V	V+	Signal	GND	GND Sig.
4...20 mA	V+	n. c.	Signal	n. c.
1kOhm	V+	Slider	GND	n. c.

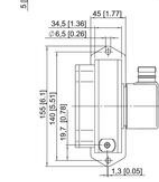
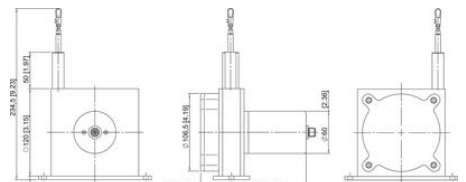
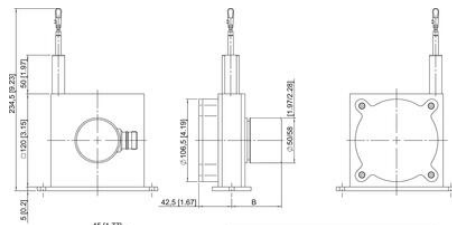
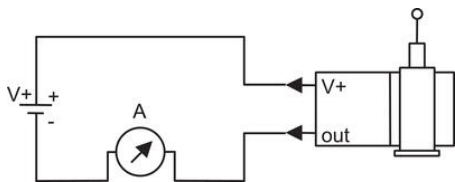
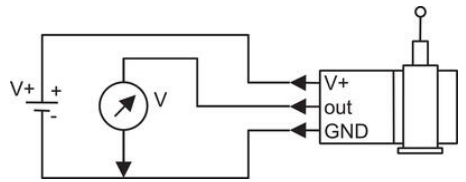
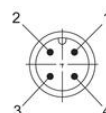


Dimension B depends on the encoder used

Encoder	B
Sendix incremental (5000) D8.4C1.XXXX.00XX.XXXX	54.25
Sendix absolute (S863) D8.4C1.XXXX.63XX.XXXX	66.75
Sendix absolute (S868) D8.4C1.XXXX.68XX.XXX	93.25



Pin	1	2	3	4
Cable colour	brown	white	blue	black
0...10V	V+	Signal	GND	GND Sig.
4...20 mA	V+	n. c.	Signal	n. c.
1kOhm	V+	Slider	GND	n. c.



Dimension B depends on the encoder used

Encoder	B
Sendix incremental (5000) D8.4C1.XXXX.00XX.XXXX	54.25
Sendix absolute (S863) D8.4C1.XXXX.63XX.XXXX	66.75
Sendix absolute (S868) D8.4C1.XXXX.68XX.XXX	93.25

