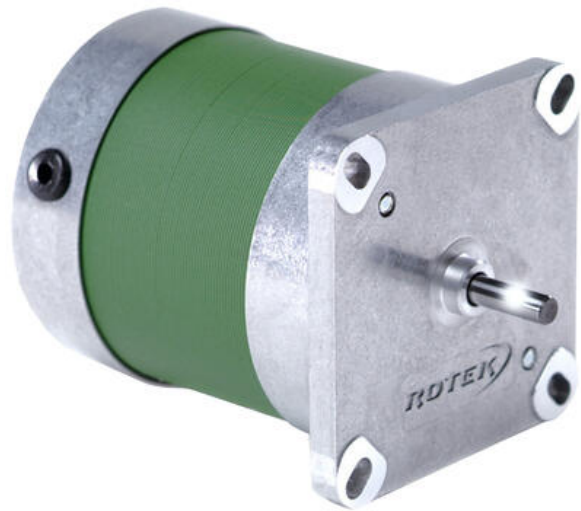


SYNKRONMOTOR

Serie Rosync

ROSYNC 44.0

- Ø = 65mm
- 20 - 85W
- 85 - 2300mA / 12 - 54Ncm
- CE godkjent



PRODUKTBESKRIVELSE

Roteks nyutviklede Rosync har en videreutviklet stator og nytt materiale i rotoren. Dette bidrar til høyere effektivitet, spesielt ved 3-faset tilførsel, hvor effektiviteten overstiger 90%. Motoren kan kombineres med snikke-, tannhjuls- og planetgir.

TEKNISKE DATA

Akseldiameter	5 mm
Diameter	65 mm
Frekvens	50/60 Hz
Inngangseffekt	30/31 VA
IP-klasse	IP40, IP55
Isolasjonsklasse	F 155°C
Kondensator	120 µF
Matespenning	0,13 V DC
Moment	13/12 Ncm
Strøm	1250/1300 mA
Supply voltage options	24 V AC
Turtall	1500/1800 rpm
Uteffekt	20/22 W

PLANETARY GEARS
 max. 3 – 50 Nm
 i = 4:1 – 308:1
 output shaft Ø = 14 mm
 for motors up to 100 W
 >> more

WORM GEARS
 max. 5 – 12 Nm
 i = 25:1 – 105:1
 shaft spacing 31 mm
 for motors up to 50 W
 >> more

SPUR GEARS
 max. 9 – 15 Nm
 i = 5:1 – 133:1
 output shaft Ø = 12 mm
 for motors up to 50 W
 >> more

FLAT GEARS
 max. 10 – 27 Nm
 i = 50:1 – 1536:1
 output shaft Ø = 15 mm
 for motors 22 – 50 W
 >> more



**ONE TECHNOLOGY
 BOUNDLESS POSSIBILITIES**



PLANETARY
 planetary gears
 conventional shafts
 hollow shafts

WORM
 low noise gearbox
 conventional shafts
 conventional shaft spacing
 conventional housing

SPUR
 gear motor
 planetary gears (PG)
 hollow shafts
 external gears
 output shaft

ELECTRICAL
 DC motor
 AC motor
 stepper motor
 brushless motor

ACCESSORIES
 pulleys
 belts
 rollers
 gears
 mounting brackets

PLANETARY GEARS
 max. 3 – 50 Nm
 i = 4:1 – 308:1
 output shaft Ø = 14 mm
 for motors up to 100 W
 >> more

WORM GEARS
 max. 5 – 12 Nm
 i = 25:1 – 105:1
 shaft spacing 31 mm
 for motors up to 50 W
 >> more

SPUR GEARS
 max. 9 – 15 Nm
 i = 5:1 – 133:1
 output shaft Ø = 12 mm
 for motors up to 50 W
 >> more

FLAT GEARS
 max. 10 – 27 Nm
 i = 50:1 – 1536:1
 output shaft Ø = 15 mm
 for motors 22 – 50 W
 >> more



**ONE TECHNOLOGY
 BOUNDLESS POSSIBILITIES**



PLANETARY
 planetary gears
 conventional shafts
 conventional shaft spacing
 conventional housing

WORM
 low noise gearbox
 planetary gears (PG)
 hollow shafts
 external gears
 output shaft

ELECTRICAL
 DC motor
 AC motor
 stepper motor
 brushless motor

ACCESSORIES
 pulleys
 belts
 rollers
 gears
 mounting brackets