

BØRSTEMOTOR

Serie 321

321.1000.3B.09

Motor 24V DC 2700rpm 1.9Nm 27A IP69K

- Ø = 101mm
- 2700rpm
- 24 - 36V / 1,9 - 2, 7Nm

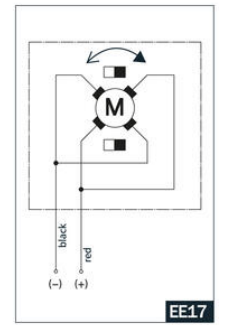
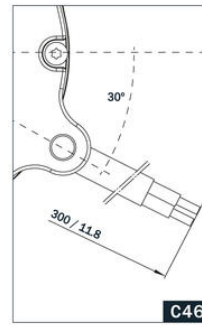
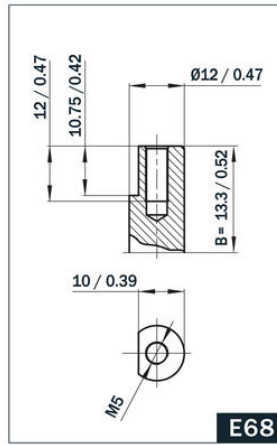
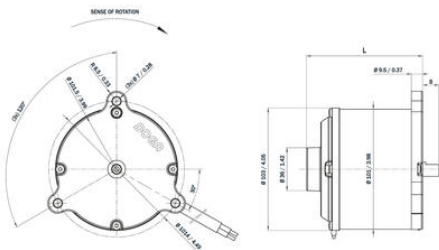
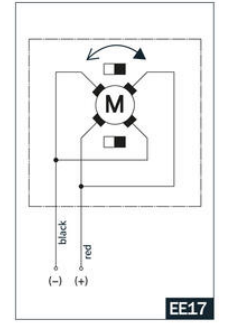
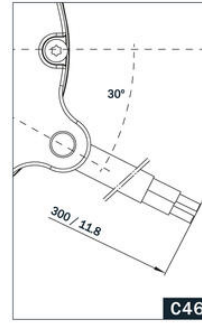
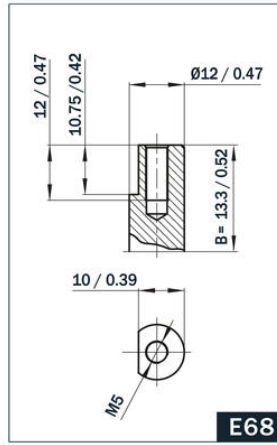
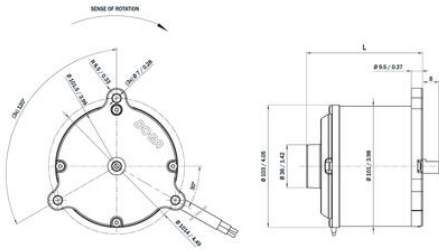
**PRODUKTBESKRIVELSE**

Doga 321-serien er en motortype designet for bruk i elektriske kjøretøy som f.eks. elektriske rullestoler eller andre applikasjoner hvor det er krav til høy IP klasse. Kompakte og høye ytelser, med IP69K som standard.

Tilgjengelig i 24V eller 36V versjoner.

TEKNISKE DATA

Akseldiameter	12 mm
Hastighet nominell	2700 omdr/min
IP-klasse	IP69K
Matespenning	24 V DC
Moment maks	19
Momentkurve	69
Nominelt moment	1,9
Strøm maks.	250 A
Strøm nominell	27 A



C46

EE17

C46

EE17

E68

E68