

## SERIE 54-2700

### Back pressure regulator

54-2700  
 Serie 54-2700

- Maks inngangstrykk: Luft: 34,5 bar, Kuppel: 379 bar, Fjær: 34,5 bar
- Dimensjonerende prøvetrykk: 150 % av maksimalt driftstrykk
- Maks luftstyringstrykk: 6,9 bar
- Temperaturområde: -40 til 74 °C
- Cv: 5,0



SPRING LOADED

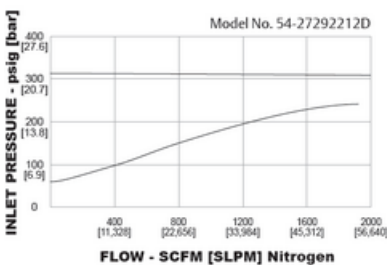
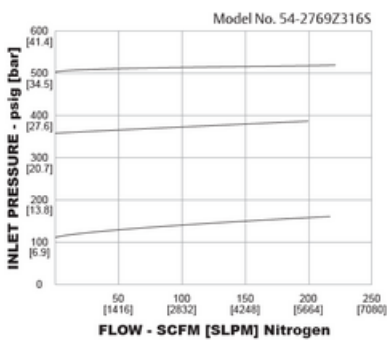
## PRODUKTBESKRIVELSE

### Applikasjoner

- Prosesskontroll
- Kontroll av pumpens utløpstrykk ved høy flow
- Hydrauliske teststasjoner

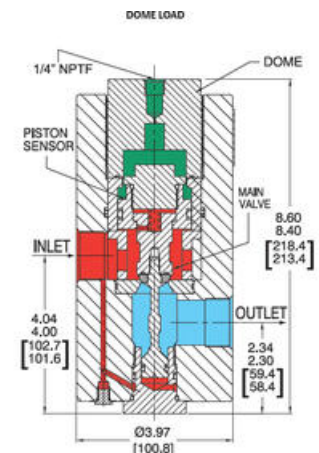
### Fordele

- Tilgjengelig i luft-, kuppel- og fjærbelastet utførelse
- Kompatibel med ER5000 (kun luftstyrt utførelse)
- Høy flow: Cv = 5,0
- Maks kontrollert trykkområde på 34,5 eller 379 bar



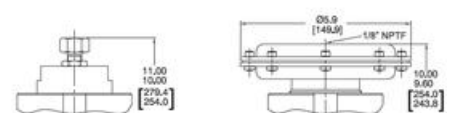
Example for selecting a part number:

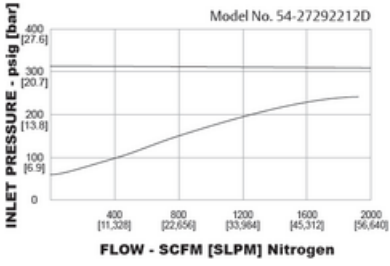
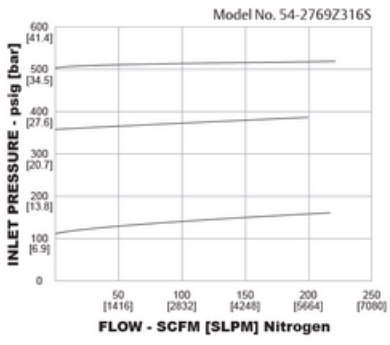
54-27		2	9	Z			2	16	A
BASIC SERIES	BODY MATERIAL	CONTROL PRESSURE	O-RINGS	SEAT	TEMPERATURE	INLET AND OUTLET PORT TYPE	PORT SIZE	LOADING OPTIONS	
54-27	2 - 303 Stainless Steel 4 - 316 Stainless Steel	9 - 500 psig / 34.5 bar (500 psig / 379 bar for dome load only)	T - FKM Z - Ethylene Propylene D - Nitrile V - IEM (Other's)	Glass Filled PEEK Glass Filled PEEK Glass Filled PEEK Invar® Invar® (Drop® SP22)	-15° to 300° 20° to 310° -65° to 200° -40° to 121° -40° to 30° -15° to 300° -20° to 310°	1 - SA-C 2 - NPTF 3 - MS33049	1/8 - 1"	A - Air D - Dome S - Spring	



SPRING LOAD

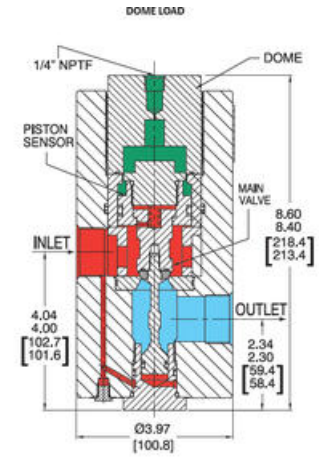
AIR LOAD



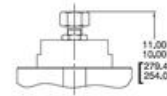


Example for selecting a part number:

54-27	2	9	Z		2	16	A	
BASIC SERIES	BODY MATERIAL	CONTROL PRESSURE	O-RINGS	SEAL	TEMPERATURE	INLET AND OUTLET PORT TYPE	PORT SIZE	LOADING OPTIONS
54-27	2 - 303 Stainless Steel 6 - 316 Stainless Steel	9 - 100 psig / 6.9 bar (500 psig / 37.3 bar for dome load only)	T - FKM (Viton® A) Z - Ethylene Propylene D - Nitrile V - FKM (Viton® A)	Class Filled PEEK Class Filled PEEK Class Filled PEEK Rohmco® (Dyne® 9923)	151 to 300°F -20°C to 150°C -40°F to 210°F -40°C to 117°C -40°F to 107°F -40°C to 10°C 151 to 300°F -20°C to 100°C	1 - 1/4" 2 - NPT 3 - MS35049	16 - 1"	A - Air D - Dome S - Spring
							Body diameter is 4.50"	



SPRING LOAD



AIR LOAD

