

SERIE 54-2300

Back pressure regulator

54-2300

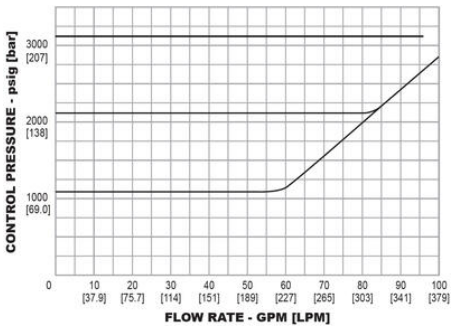
Back pressure regulator for luft i hydrauliske applikasjoner

- Maks inngangstrykk: fjær og kuppel 345 bar, luft 690 bar
- Trykkområde: 69,0, 103, 172, 241, 345 og 690 bar
- Dimensjonerende prøvetrykk: 150 % av maks nominelt trykk
- Lekkasettetthet: 2 dråper/min ved 150 S.U.S. ved 172 bar
- Cv: 1,6



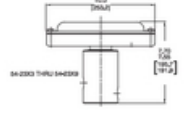
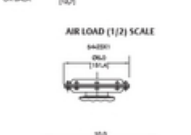
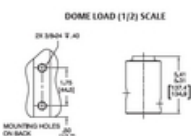
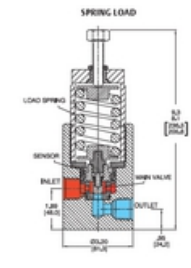
PRODUKTBESKRIVELSE

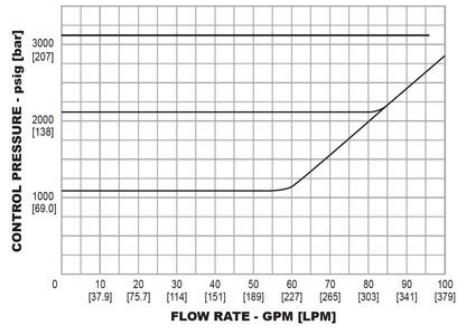
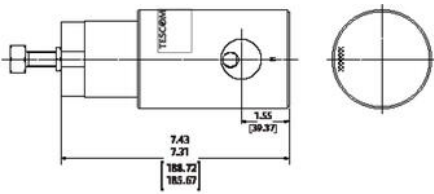
Back pressure regulator for luft med høy kapasitet. Serie 54-2300 håndterer flow fra 5–50 GPM og kan leveres med luftbelastning for bruk sammen med den elektropneumatiske styreenheten ER5000.



Threaded End Connector Part Number Selection:

54-23	2	1	T			2	12	5	
			DYNAMIC	STATIC	SEAT				
BASIC SERIES	BODY MATERIAL	CONTROL PRESSURE RANGES	SOFT GOOD MATERIAL			TEMPERATURE (MEDIAN ONLY)	PORT TYPE	PORT SIZE	LOADING METHOD
54-23	2 - 303 Stainless Steel 6 - 304 Stainless Steel	0 - 20 000 psig 1.4 000 bar (spring only) 1 - 20 1500 psig 1.4 000 bar (spring and air only) 3 - 30 3700 psig 1.4 000 bar (spring only) 5 - 200 5000 psig 13.8 345 bar (spring and diaphragm) 9 - 250 6200 psig 17.2 690 bar (air only 3.25 1")	D - Buna N T - Viton® U - Polyurethane Z - Ethylene Propylene	N - Buna N V - Viton® P - Polyurethane E - Ethylene Propylene	17-4 Stainless Steel 17-4 Stainless Steel 17-4 Stainless Steel 17-4 Stainless Steel 17-4 Stainless Steel	-40°F to 150°F -40°C to 24°C -55°F to 300°F -20°C to 149°C -15°F to 125°F -20°C to 52°C -40°F to 225°F -40°C to 105°C	1 - VCE 2 - NPT	08 - 1/2" 12 - 1/4"	S - Spring H - Diaphragm A - Air





Threaded End Connector Part Number Selection:

BASIC SERIES	BODY MATERIAL	CONTROL PRESSURE RANGES	SOFT GOODS MATERIAL			PORT TYPE	PORT SIZE	LOADING METHOD	
			DYNAMIC	STATIC	SEAL				
54-23	2 - 303 Stainless Steel 6 - 316 Stainless Steel	0 - 20 000 psig 1.4-6.0 bar (spring only) 1 - 20 000 psig 1.4-6.0 bar (spring and air only) 3 - 50 000 psig 3.4-34.1 bar (spring only) 5 - 200 000 psig 13.8-340 bar (spring and damper 1.1 and air 7-13) 9 - 250 000 psig 17.2-68.0 bar (air only 10-17)	D - Buna N T - Viton® U - Polyurethane Z - Ethylene Propylene	Buna N Vitron® Polyurethane Ethylene Propylene	17.4 Stainless Steel 17.4 Stainless Steel 17.4 Stainless Steel 17.4 Stainless Steel	407 to 1657 407 to 743 157 to 3007 207 to 1497 157 to 1217 207 to 527 407 to 2217 477 to 1017°C	1 - NPT 2 - NPT	1/2" - 1 1/2" 12 - 1/4"	S - Spring M - Closure A - Air

* Refer to reference code

