

SERIE 26-2700

Back pressure regulator

26-2700
 Serie 26-2700

- Maks inngangstrykk: Luftbelastet: 31,0 bar, Kuppelbelastet: 68,9 bar, Fjærbelastet: 0–2,1 bar, 0–5,5 bar, 0–12,8 bar, 0–20,7 bar, 0–25,9 bar
- Referansetrykk: Luftbelastet: maks 10,3 bar (3:1-forhold) Kuppelbelastet: maks 68,9 bar
- Dimensjonerende prøvetrykk: 150 % av nominelt trykk
- Lekkasjetetthet: bobletett
- Cv: 2,0



DOME



SPRING

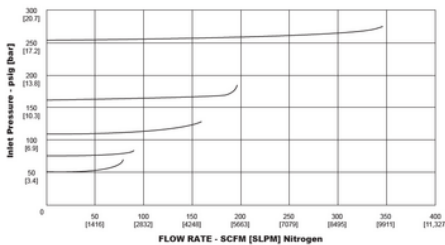
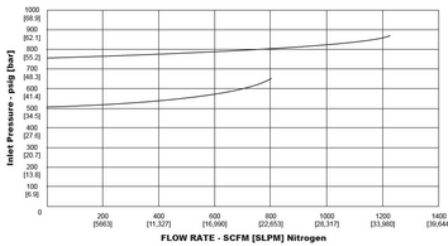
PRODUKTBESKRIVELSE

Applikasjoner

- Pumpe- og kompressorstyring
- Prosesskontroll av trykk
- Kjemisk injeksjon med høyt flow og lavt trykk

Fordeler

- Egnet for gass- og væskeapplikasjoner
- Tilgjengelig med kuppel- og luftstyring
- Kompatibel med ER5000
- Høy flowkapasitet

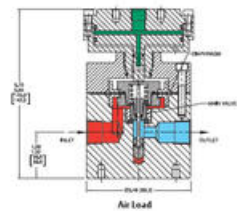
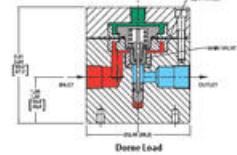
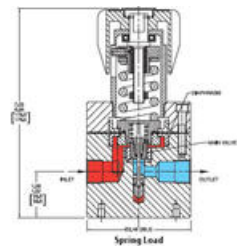


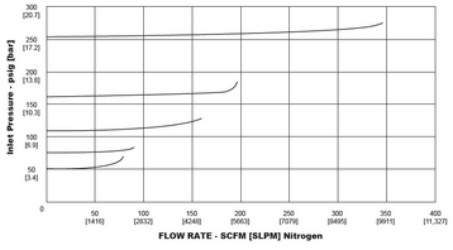
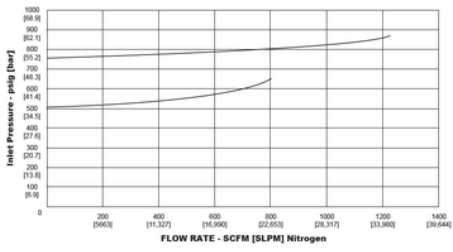
BASIC SERIES	BODY MATERIAL	MAXIMUM INLET PRESSURE	O-RING	VALVE SEAT	MATERIALS	OPERATING TEMPERATURE*	INLET AND OUTLET PORT TYPE	INLET AND OUTLET PORT SIZE
26-27	1 - Brass	0 - 100 psig 0-6.9 bar	B - BUNA-N	CTFE	-80°F to 155°F / -48°C to 74°C	1 - SA2	1/2" - 1/2"	
	2 - 316 Stainless Steel		E - E.A.	ValveP® (S21)	-80°F to 155°F / -48°C to 74°C	2 - NPT	1/2" - 1/2"	
			M - E.A.	CTFE	-80°F to 155°F / -48°C to 74°C			
			V - Viton®	CTFE	0°F to 155°F / -18°C to 74°C			
			W - Viton®	ValveP® (S21)	0°F to 300°F / -18°C to 149°C			

BASIC SERIES	BODY MATERIAL	MAXIMUM INLET PRESSURE	O-RING	VALVE SEAT	MATERIALS	OPERATING TEMPERATURE*	INLET AND OUTLET PORT TYPE	INLET AND OUTLET PORT SIZE
26-27	1 - Brass	0 - 100 psig 0-6.9 bar	E - E.A.	Polyimide (ValveP® S21)	-80°F to 155°F / -48°C to 74°C	1 - SA2	1/2" - 1/2"	
	2 - 316 Stainless Steel		M - E.A.	PCFTE	-80°F to 155°F / -48°C to 74°C	2 - NPT	1/2" - 1/2"	
			V - Viton® (Viton®-A)	PCFTE	0°F to 155°F / -18°C to 74°C			
			W - PEEK (Viton®-A)	Polyimide (ValveP® S21)	0°F to 300°F / -18°C to 149°C			

BASIC SERIES	BODY MATERIAL	MAXIMUM INLET PRESSURE	O-RING	VALVE SEAT	MATERIALS	OPERATING TEMPERATURE*	INLET AND OUTLET PORT TYPE	INLET AND OUTLET PORT SIZE
26-27	1 - Brass	0 - 25 psig 0-1.7 bar	E - E.A.	Polyimide (ValveP® S21)	-80°F to 155°F / -48°C to 74°C	1 - SA2	1/8" - 1/8"	
	2 - 316 Stainless Steel	0 - 50 psig 0-3.5 bar	M - E.A.	PCFTE	-80°F to 155°F / -48°C to 74°C	2 - NPT	1/2" - 1/2"	
		0 - 100 psig 0-7 bar	V - Viton® (Viton®-A)	PCFTE	0°F to 155°F / -18°C to 74°C			
		0 - 200 psig 0-14 bar	W - PEEK (Viton®-A)	Polyimide (ValveP® S21)	0°F to 300°F / -18°C to 149°C			
		0 - 275 psig 0-19.7 bar						

* Brass body is limited to +200°F (93°C) maximum.





26-27		2	0	-	V	2	DEA
BASIC SERIES	BODY MATERIAL	MAXIMUM INLET PRESSURE	O-RING	VALVE SEAT	OPERATING TEMPERATURE*	INLET AND OUTLET PORT TYPE	INLET AND OUTLET PORT SIZE
26-27	1 - Brass	0 - 150 psig 0-10.3 bar	B-BUNA-N	CTFE	-80°F to 165°F / -49°C to 74°C	1 - SAE	88 - 1/2"
	2 - 303 Stainless Steel		E - E.A. M - E.A. V - Viton® W - Viton®	PCTFE PCTFE CTFE Vespel® SP21	-80°F to 165°F / -49°C to 74°C -80°F to 165°F / -49°C to 74°C -80°F to 165°F / -49°C to 74°C -80°F to 165°F / -49°C to 74°C	2 - NPT	12 - 3/4"

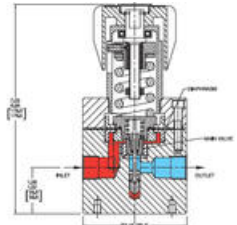
Dome Loaded

26-27		2	0	-	V	2	DEA
BASIC SERIES	BODY MATERIAL	MAXIMUM INLET PRESSURE	O-RING	VALVE SEAT	OPERATING TEMPERATURE*	INLET AND OUTLET PORT TYPE	INLET AND OUTLET PORT SIZE
26-27	1 - Brass	0 - 100 psig 0-6.9 bar	E - E.A.	Polyimide (Vespel® SP21)	-80°F to 165°F / -49°C to 74°C	1 - SAE	88 - 1/2"
	2 - 303 Stainless Steel		M - E.A. V - PEEK (Viton® A)	PCTFE PCTFE	-80°F to 165°F / -49°C to 74°C -80°F to 165°F / -49°C to 74°C	2 - NPT	12 - 3/4"
	6 - 316 Stainless Steel		W - PEEK (Viton® A)	Polyimide (Vespel® SP21)	-80°F to 165°F / -49°C to 74°C		

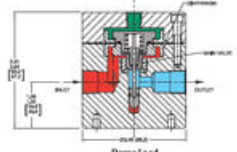
Spring Loaded

26-27		2	2	-	V	2	DEA
BASIC SERIES	BODY MATERIAL	MAXIMUM INLET PRESSURE	O-RING	VALVE SEAT	OPERATING TEMPERATURE*	INLET AND OUTLET PORT TYPE	INLET AND OUTLET PORT SIZE
26-27	1 - Brass	0 - 20 psig 0-1.4 bar	E - E.A.	Polyimide (Vespel® SP21)	-80°F to 165°F / -49°C to 74°C	1 - SAE	88 - 1/2"
	2 - 303 Stainless Steel	1 - 0-85 psig 0-5.9 bar	M - E.A.	PCTFE	-80°F to 165°F / -49°C to 74°C	2 - NPT	12 - 3/4"
	6 - 316 Stainless Steel	2 - 0-185 psig 0-13.0 bar	V - PEEK (Viton® A)	PCTFE	-80°F to 165°F / -49°C to 74°C		
		3 - 0-280 psig 0-20.0 bar	W - PEEK (Viton® A)	Polyimide (Vespel® SP21)	-80°F to 165°F / -49°C to 74°C		
		4 - 0-275 psig 0-20.0 bar					

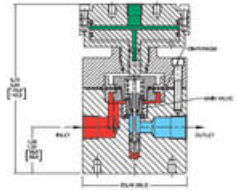
* Brass body is limited to +200°F (93°C) maximum.



Spring Load



Dome Load



Air Load