

SERIE 26-2300

Back pressure regulator

26-2300

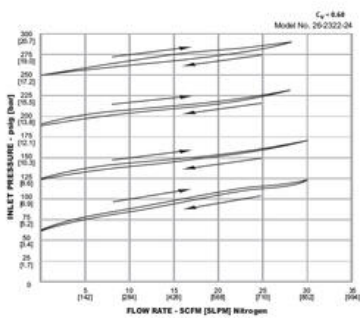
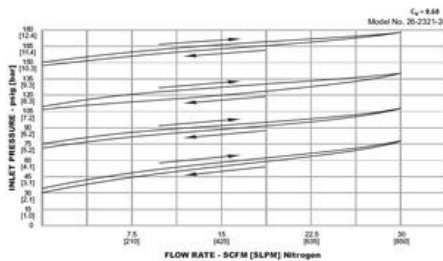
Back pressure regulator for hydraulikk

- Maks inngangstrykk: 0–3,4, 0–10,3, 0–17,2 bar
- Dimensjonerende prøvetrykk: 150 % av maksimum
- Lekkasjeetthet: bobletett
- Temperaturområde: -40 °C til 74 °C (utvidet: -40 °C til 204 °C)
- Cv: 0,60



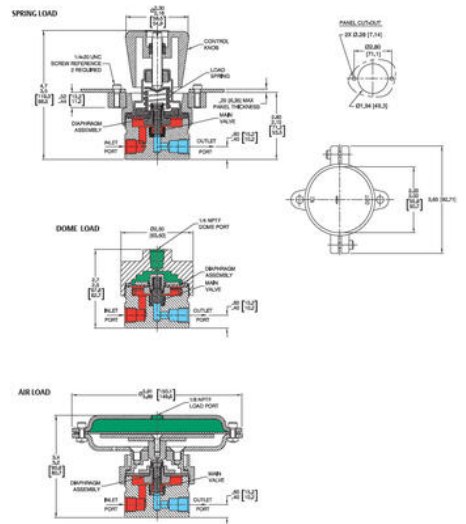
PRODUKTBESKRIVELSE

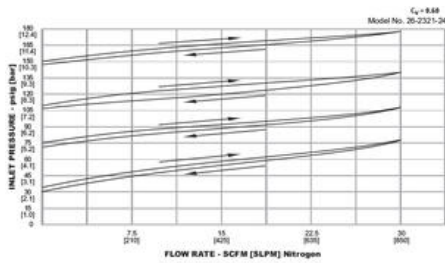
Regulerer trykk opp til 500 psig / 34,5 bar og tilbyr flere Cv-verdier fra 0,02 til 1,0. Luft- og kuppelbelastede versjoner er tilgjengelige for fjernstyring eller for bruk sammen med den elektropneumatiske styreenheten ER5000 i automatiserte løsninger.



Example for selecting a part number:

26-23	2	1	2	4
BASIC SERIES	BODY MATERIAL	CONTROL PRESSURE RANGE	INLET AND OUTLET PORT TYPE	INLET AND OUTLET PORT SIZE
26-23	2 - 303 Stainless Steel 3 - 2024 T351 Aluminum 6 - 316 Stainless Steel	0 - 0.50 psig 0 - 3.4 bar 1 - 0.100 psig 0 - 0.7 bar 2 - 0.250 psig 0 - 1.7 bar	1 - SAE 2 - NPT 3 - MS-13549	4 - 1/4" 6 - 3/8" 8 - 1/2"

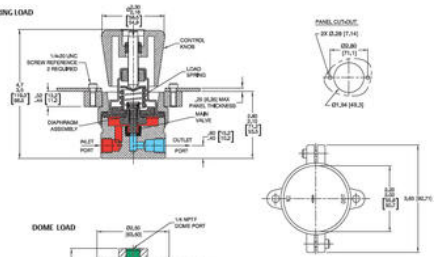




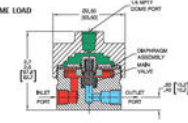
Example for selecting a part number:

26-23	2	1	2	4
BASE SERIES	BODY MATERIAL	CONTROL PRESSURE RANGE	INLET AND OUTLET PORT TYPE	INLET AND OUTLET PORT SIZE
26-23	2 - 303 Stainless Steel 3 - 2024 T351 Aluminum 6 - 316 Stainless Steel	0 - 0.50 psig 0.3 bar 1 - 0.150 psig 0.10.1 bar 2 - 0.250 psig 0.17.7 bar	1 - SAJ 2 - NPT 3 - MS31549	4 - 1/4" 6 - 3/8" 8 - 1/2"

SPRING LOAD



DOME LOAD



AIR LOAD

