

SERIE 56-2000

Trykkreduserende regulator

56-2000

Serie 56-2000

- Maks inngangstrykk: 1034 bar
- Maks utgangstrykk: 1034 bar
- Temperaturområde: -26 til 74 °C
- Cv: 0,06, 0,12
- Boblettett



PRODUKTBESKRIVELSE

Applikasjoner

- Offshore kjemisk injeksjon

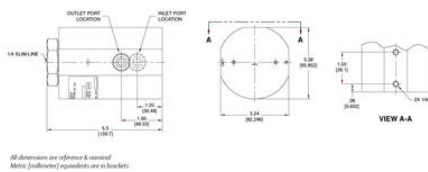
Fordeler

- Nøyaktig og kontinuerlig flowkontroll som reduserer risikoen for flowtap under og etter injeksjon
- Stempelføler av høy kvalitet gir lengre levetid i offshore applikasjoner og reduserer vedlikehold og nedetid
- Mulighet for helautomatisk kontroll av injeksjonsrate med ER5000

Example for selecting a part number:

56-20	8	0	D	6	9	D	2	7	0
BASIC SERIES	MAXIMUM INLET PRESSURE (BODY MATERIAL)	MAXIMUM OUTLET PRESSURE (SPRING-BIAS PRESSURE)	SOFT GOODS MATERIAL	INLET AND OUTLET PORT TYPE	INLET AND OUTLET PORT SIZE	FLOW CAPACITY	MAIN VALVE AND VENT SEAT	GAUGE PORT OPTIONS	
56-20	R = 15,000 psig (1034 bar) (17.4 NPS) N = 15,000 psig (1034 bar) (NORSK G6)	0 = 200 15,000 psig (1034 bar) 1.1.8 20 34 bar 1.1.9 200 psig 1.2 1.1.8 bar	D = Nitrile, Buna N Mitrile, Buna N PC T11	4 = Medium Pressure	9 = 1/2" (1.27") 2 = C _v = 0.06 3 = C _v = 0.12	7 = 1/2" (1.27") 8 = No-gauge ports			

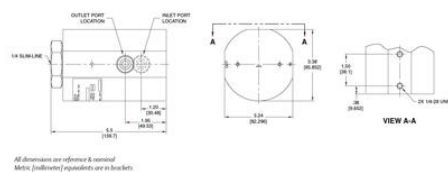
1. Pressure at which regulator is used must be compatible with the pressure rating of the regulator and part (see type provided).



Example for selecting a part number:

56-20	8	0	D	6	9	D	2	7	0
BASIC SERIES	MAXIMUM INLET PRESSURE (BODY MATERIAL)	MAXIMUM OUTLET PRESSURE (SPRING-BIAS PRESSURE)	SOFT GOODS MATERIAL	INLET AND OUTLET PORT TYPE	INLET AND OUTLET PORT SIZE	FLOW CAPACITY	MAIN VALVE AND VENT SEAT	GAUGE PORT OPTIONS	
56-20	R = 15,000 psig (1034 bar) (17.4 NPS) N = 15,000 psig (1034 bar) (NORSK G6)	0 = 200 15,000 psig (1034 bar) 1.1.8 20 34 bar 1.1.9 200 psig 1.2 1.1.8 bar	D = Nitrile, Buna N Mitrile, Buna N PC T11	4 = Medium Pressure	9 = 1/2" (1.27") 2 = C _v = 0.06 3 = C _v = 0.12	7 = 1/2" (1.27") 8 = No-gauge ports			

1. Pressure at which regulator is used must be compatible with the pressure rating of the regulator and part (see type provided).



All dimensions are reference & nominal.
Metric (dimension) equivalents are in brackets.