

SERIE 50-2200

Trykkreduserende regulator

50-2200
50-2200 Serien

- Maks inngangstrykk: 1379 bar
- Maks utgangstrykk: 1379 bar
- Temperaturområde: -26 til 74 °C
- Cv: 0,06, 0,12
- Lekkasjetetthet: 2 dråper/min ved 150 S.U.S. og 2500 psig / 172 bar



PRODUKTBESKRIVELSE

Applikasjoner

- Wellhead control panels
- Subsea ventilaktivering
- Kjemisk injeksjon
- Hydrauliske kraftenheter (HPU)

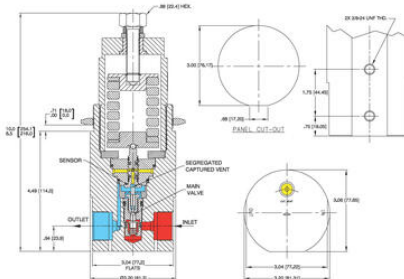
Fordeler

- Nytt stempel- og tetningsdesign som gir lengre levetid i høye trykkområder, spesielt i vannbaserte hydrauliske applikasjoner
- Spesialdesignet sete og ventil for optimal drift i hydrauliske systemer
- Separert og kontrollert ventilering
- Tapered poppet-design for bedre trykkontroll
- Tilgjengelig i høytrykkutførelser

Example for selecting a part number:

BASIC SERIES	MAXIMUM INLET PRESSURE* (BODY MATERIAL)	MAXIMUM OUTLET PRESSURE	DYNAMIC BOND-SEALS	STATIC O-RINGS	BACKLAP RINGS	INLET AND OUTLET PORT TYPE (EVENT PORT)	INLET AND OUTLET PORT SIZE	FLOW CAPACITY	MAIN VALVE AND VENT SEAT	GAUGE PORT OPTIONS
50-22	9 - 15,000 psig (552 bar) (EPR/SIS) N - 20,000 psig (1379 bar) (Nitronic 60)	D - 300 15,000 psig (20.7 1034 bar) 9 - 300 20,000 psig (20.7 1379 bar)	D - NiTiAl, Buna N E - PEEK (Viton®-A)	NiTiAl, Buna N FKM (Viton®-A)	PCTFE	4 - High Pressure (1 1/4" NPT) 6 - Medium Pressure (1 1/4" NPT)	4 - 1 1/4" 6 - 3/4" 9 - 1/2"	2 - C _v = 0.06 3 - C _v = 0.12	5 - 1/4" Stainless Steel	8 - No gauge ports 3 - 1/4" outlet gauge at 90°

* Pressure at which regulator is used must be compatible with the pressure rating of the regulator and part select type provided.



Example for selecting a part number:

BASIC SERIES	MAXIMUM INLET PRESSURE* (BODY MATERIAL)	MAXIMUM OUTLET PRESSURE	DYNAMIC BOND-SEALS	STATIC O-RINGS	BACKLAP RINGS	INLET AND OUTLET PORT TYPE (EVENT PORT)	INLET AND OUTLET PORT SIZE	FLOW CAPACITY	MAIN VALVE AND VENT SEAT	GAUGE PORT OPTIONS
50-22	9 - 15,000 psig (552 bar) (EPR/SIS) N - 20,000 psig (1379 bar) (Nitronic 60)	D - 300 15,000 psig (20.7 1034 bar) 9 - 300 20,000 psig (20.7 1379 bar)	D - NiTiAl, Buna N E - PEEK (Viton®-A)	NiTiAl, Buna N FKM (Viton®-A)	PCTFE	4 - High Pressure (1 1/4" NPT) 6 - Medium Pressure (1 1/4" NPT)	4 - 1 1/4" 6 - 3/4" 9 - 1/2"	2 - C _v = 0.06 3 - C _v = 0.12	5 - 1/4" Stainless Steel	8 - No gauge ports 3 - 1/4" outlet gauge at 90°

* Pressure at which regulator is used must be compatible with the pressure rating of the regulator and part select type provided.

