

## SERIE 44-5800

### Trykkreduserende regulator

44-5800  
 Serie 44-5800

- Maks inngangstrykk: 414 bar
- Maks utgangstrykk: 34,5 bar
- Maks temperatur: 65 °C
- Cv: 0,02
- Lekkasjetetthet: bobletett, membran 2 x 10<sup>-8</sup> atm cc/sek He



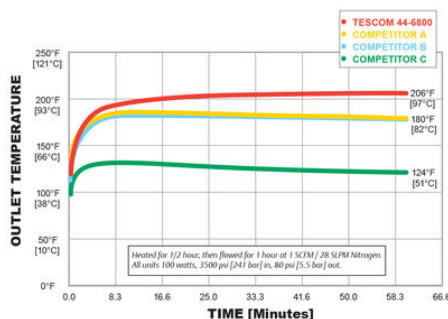
## PRODUKTBESKRIVELSE

### Applikasjoner

- Analyseutstyr for flytende petroleum
- Petrokjemiske-/raffinerianalysatorer
- Prøvetakingsystemer

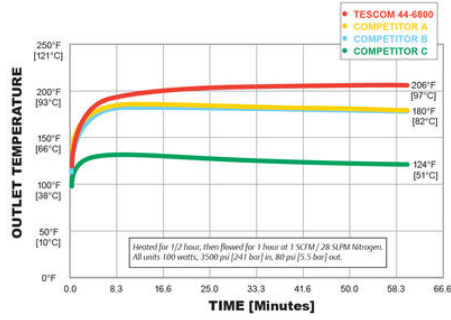
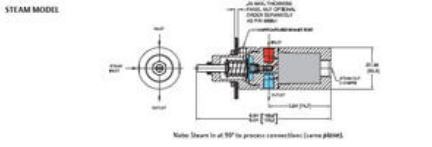
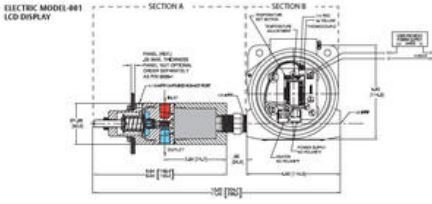
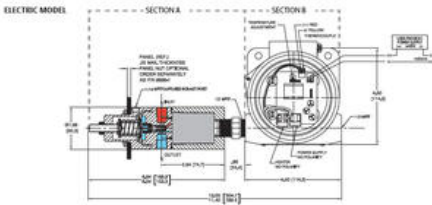
### Fordeler

- Utviklet for 115/230 V VAC, 50/60 Hz
- 4–20 mA analog utgang for ekstern temperaturovervåking og datainnsamling
- Kan leveres med LCD-temperaturdisplay
- Kan bestilles for panelmontasje
- Avansert varmeoverføringsteknologi
- Enkeltrotterende temperaturkontroll for varmeelement
- CSA-, ATEX- og IECEx-sertifisering for T3 (200 °C)-klassifisering
- NACE MR0175 / ISO 15156



Example for selecting a part number:

ELECTRIC MODEL										STEAM MODEL										
44-58										44-58										
BASIC SERIES	6	1	D	2	4	1	E	6	1	2	4	1	5	BASIC SERIES	6	1	2	4	1	5
MATERIAL	DIAPHRAGM	SPRING	REMAINING PARTS	OUTLET PRESSURE RANGE	HEATER	INLET AND OUTLET PORT TYPE	INLET AND OUTLET PORT SIZE	INLET PRESSURE	VOLTAGE	MATERIAL	DIAPHRAGM	SPRING	REMAINING PARTS	OUTLET PRESSURE RANGE	INLET AND OUTLET PORT TYPE	INLET AND OUTLET PORT SIZE	INLET PRESSURE			
44-58	S - Nickel Alloy (Inconel®)	Nickel Alloy (Inconel®)	Cobalt (Stainless®)	Nickel Alloy (Inconel®)	0 - 25 psig / 0 - 1.7 bar	A - 12.5 WATTS	2 - NPT	4 - 1/2"	1 - 6000 psig / 414 bar	E - 115 VAC	44-58	S - Nickel Alloy (Inconel®)	Cobalt Chrome (Stainless®)	Nickel Alloy (Inconel®)	0 - 17.5 psig / 0 - 1.2 bar	2 - NPT	4 - 1/2"	1 - 6000 psig / 414 bar		
	Cobalt (Stainless®)	Nickel Alloy (Inconel®)	316 (Stainless®)	0 - 100 psig / 0 - 7.0 bar	B - 10 WATTS	2 - NPT	4 - 1/2"	1 - 6000 psig / 414 bar	E - 230 VAC		6 - 316 (Stainless®)	Cobalt Chrome (Stainless®)	316 (Stainless®)	0 - 17.5 psig / 0 - 1.2 bar						
	6 - 316 (Stainless®)	Chromite (Stainless®)	Stainless (Inconel®)	0 - 50 psig / 0 - 3.5 bar	C - 25 WATTS	2 - NPT	4 - 1/2"	1 - 6000 psig / 414 bar	E - 230 VAC		9 - Nickel Alloy (Inconel®)	Cobalt Chrome (Stainless®)	Nickel Alloy (Inconel®)	0 - 100 psig / 0 - 7.0 bar						
	9 - Nickel Alloy (Inconel®)	Chromite (Stainless®)	Stainless (Inconel®)	0 - 100 psig / 0 - 7.0 bar	D - 100 WATTS	2 - NPT	4 - 1/2"	1 - 6000 psig / 414 bar	E - 230 VAC			6 - 316 (Stainless®)	Cobalt Chrome (Stainless®)	316 (Stainless®)	0 - 100 psig / 0 - 7.0 bar					
		Chromite (Stainless®)	Stainless (Inconel®)	0 - 100 psig / 0 - 7.0 bar								9 - Nickel Alloy (Inconel®)	Cobalt Chrome (Stainless®)	Nickel Alloy (Inconel®)	0 - 100 psig / 0 - 7.0 bar					
		Chromite (Stainless®)	Stainless (Inconel®)	0 - 100 psig / 0 - 7.0 bar									6 - 316 (Stainless®)	Cobalt Chrome (Stainless®)	316 (Stainless®)	0 - 100 psig / 0 - 7.0 bar				
		Chromite (Stainless®)	Stainless (Inconel®)	0 - 100 psig / 0 - 7.0 bar									9 - Nickel Alloy (Inconel®)	Cobalt Chrome (Stainless®)	Nickel Alloy (Inconel®)	0 - 100 psig / 0 - 7.0 bar				
		Chromite (Stainless®)	Stainless (Inconel®)	0 - 100 psig / 0 - 7.0 bar										6 - 316 (Stainless®)	Cobalt Chrome (Stainless®)	316 (Stainless®)	0 - 100 psig / 0 - 7.0 bar			
		Chromite (Stainless®)	Stainless (Inconel®)	0 - 100 psig / 0 - 7.0 bar										9 - Nickel Alloy (Inconel®)	Cobalt Chrome (Stainless®)	Nickel Alloy (Inconel®)	0 - 100 psig / 0 - 7.0 bar			
		Chromite (Stainless®)	Stainless (Inconel®)	0 - 100 psig / 0 - 7.0 bar										6 - 316 (Stainless®)	Cobalt Chrome (Stainless®)	316 (Stainless®)	0 - 100 psig / 0 - 7.0 bar			
		Chromite (Stainless®)	Stainless (Inconel®)	0 - 100 psig / 0 - 7.0 bar										9 - Nickel Alloy (Inconel®)	Cobalt Chrome (Stainless®)	Nickel Alloy (Inconel®)	0 - 100 psig / 0 - 7.0 bar			
		Chromite (Stainless®)	Stainless (Inconel®)	0 - 100 psig / 0 - 7.0 bar										6 - 316 (Stainless®)	Cobalt Chrome (Stainless®)	316 (Stainless®)	0 - 100 psig / 0 - 7.0 bar			
		Chromite (Stainless®)	Stainless (Inconel®)	0 - 100 psig / 0 - 7.0 bar										9 - Nickel Alloy (Inconel®)	Cobalt Chrome (Stainless®)	Nickel Alloy (Inconel®)	0 - 100 psig / 0 - 7.0 bar			
		Chromite (Stainless®)	Stainless (Inconel®)	0 - 100 psig / 0 - 7.0 bar										6 - 316 (Stainless®)	Cobalt Chrome (Stainless®)	316 (Stainless®)	0 - 100 psig / 0 - 7.0 bar			
		Chromite (Stainless®)	Stainless (Inconel®)	0 - 100 psig / 0 - 7.0 bar										9 - Nickel Alloy (Inconel®)	Cobalt Chrome (Stainless®)	Nickel Alloy (Inconel®)	0 - 100 psig / 0 - 7.0 bar			
		Chromite (Stainless®)	Stainless (Inconel®)	0 - 100 psig / 0 - 7.0 bar										6 - 316 (Stainless®)	Cobalt Chrome (Stainless®)	316 (Stainless®)	0 - 100 psig / 0 - 7.0 bar			
		Chromite (Stainless®)	Stainless (Inconel®)	0 - 100 psig / 0 - 7.0 bar										9 - Nickel Alloy (Inconel®)	Cobalt Chrome (Stainless®)	Nickel Alloy (Inconel®)	0 - 100 psig / 0 - 7.0 bar			
		Chromite (Stainless®)	Stainless (Inconel®)	0 - 100 psig / 0 - 7.0 bar										6 - 316 (Stainless®)	Cobalt Chrome (Stainless®)	316 (Stainless®)	0 - 100 psig / 0 - 7.0 bar			
		Chromite (Stainless®)	Stainless (Inconel®)	0 - 100 psig / 0 - 7.0 bar										9 - Nickel Alloy (Inconel®)	Cobalt Chrome (Stainless®)	Nickel Alloy (Inconel®)	0 - 100 psig / 0 - 7.0 bar			
		Chromite (Stainless®)	Stainless (Inconel®)	0 - 100 psig / 0 - 7.0 bar										6 - 316 (Stainless®)	Cobalt Chrome (Stainless®)	316 (Stainless®)	0 - 100 psig / 0 - 7.0 bar			
		Chromite (Stainless®)	Stainless (Inconel®)	0 - 100 psig / 0 - 7.0 bar										9 - Nickel Alloy (Inconel®)	Cobalt Chrome (Stainless®)	Nickel Alloy (Inconel®)	0 - 100 psig / 0 - 7.0 bar			
		Chromite (Stainless®)	Stainless (Inconel®)	0 - 100 psig / 0 - 7.0 bar										6 - 316 (Stainless®)	Cobalt Chrome (Stainless®)	316 (Stainless®)	0 - 100 psig / 0 - 7.0 bar			
		Chromite (Stainless®)	Stainless (Inconel®)	0 - 100 psig / 0 - 7.0 bar										9 - Nickel Alloy (Inconel®)	Cobalt Chrome (Stainless®)	Nickel Alloy (Inconel®)	0 - 100 psig / 0 - 7.0 bar			
		Chromite (Stainless®)	Stainless (Inconel®)	0 - 100 psig / 0 - 7.0 bar										6 - 316 (Stainless®)	Cobalt Chrome (Stainless®)	316 (Stainless®)	0 - 100 psig / 0 - 7.0 bar			
		Chromite (Stainless®)	Stainless (Inconel®)	0 - 100 psig / 0 - 7.0 bar										9 - Nickel Alloy (Inconel®)	Cobalt Chrome (Stainless®)	Nickel Alloy (Inconel®)	0 - 100 psig / 0 - 7.0 bar			
		Chromite (Stainless®)	Stainless (Inconel®)	0 - 100 psig / 0 - 7.0 bar										6 - 316 (Stainless®)	Cobalt Chrome (Stainless®)	316 (Stainless®)	0 - 100 psig / 0 - 7.0 bar			
		Chromite (Stainless®)	Stainless (Inconel®)	0 - 100 psig / 0 - 7.0 bar										9 - Nickel Alloy (Inconel®)	Cobalt Chrome (Stainless®)	Nickel Alloy (Inconel®)	0 - 100 psig / 0 - 7.0 bar			
		Chromite (Stainless®)	Stainless (Inconel®)	0 - 100 psig / 0 - 7.0 bar										6 - 316 (Stainless®)	Cobalt Chrome (Stainless®)	316 (Stainless®)	0 - 100 psig / 0 - 7.0 bar			
		Chromite (Stainless®)	Stainless (Inconel®)	0 - 100 psig / 0 - 7.0 bar										9 - Nickel Alloy (Inconel®)	Cobalt Chrome (Stainless®)	Nickel Alloy (Inconel®)	0 - 100 psig / 0 - 7.0 bar			
		Chromite (Stainless®)	Stainless (Inconel®)	0 - 100 psig / 0 - 7.0 bar										6 - 316 (Stainless®)	Cobalt Chrome (Stainless®)	316 (Stainless®)	0 - 100 psig / 0 - 7.0 bar			
		Chromite (Stainless®)	Stainless (Inconel®)	0 - 100 psig / 0 - 7.0 bar										9 - Nickel Alloy (Inconel®)	Cobalt Chrome (Stainless®)	Nickel Alloy (Inconel®)	0 - 100 psig / 0 - 7.0 bar			
		Chromite (Stainless®)	Stainless (Inconel®)	0 - 100 psig / 0 - 7.0 bar										6 - 316 (Stainless®)	Cobalt Chrome (Stainless®)	316 (Stainless®)	0 - 100 psig / 0 - 7.0 bar			
		Chromite (Stainless®)	Stainless (Inconel®)	0 - 100 psig / 0 - 7.0 bar										9 - Nickel Alloy (Inconel®)	Cobalt Chrome (Stainless®)	Nickel Alloy (Inconel®)	0 - 100 psig / 0 - 7.0 bar			
		Chromite (Stainless®)	Stainless (Inconel®)	0 - 100 psig / 0 - 7.0 bar										6 - 316 (Stainless®)	Cobalt Chrome (Stainless®)	316 (Stainless®)	0 - 100 psig / 0 - 7.0 bar			
		Chromite (Stainless®)	Stainless (Inconel®)	0 - 100 psig / 0 - 7.0 bar										9 - Nickel Alloy (Inconel®)	Cobalt Chrome (Stainless®)	Nickel Alloy (Inconel®)	0 - 100 psig / 0 - 7.0 bar			
		Chromite (Stainless®)	Stainless (Inconel®)	0 - 100 psig / 0 - 7.0 bar										6 - 316 (Stainless®)	Cobalt Chrome (Stainless®)	316 (Stainless®)	0 - 100 psig / 0 - 7.0 bar			
		Chromite (Stainless®)	Stainless (Inconel®)	0 - 100 psig / 0 - 7.0 bar										9 - Nickel Alloy (Inconel®)	Cobalt Chrome (Stainless®)	Nickel Alloy (Inconel®)	0 - 100 psig / 0 - 7.0 bar			
		Chromite (Stainless®)	Stainless (Inconel®)	0 - 100 psig / 0 - 7.0 bar										6 - 316 (Stainless®)	Cobalt Chrome (Stainless®)	316 (Stainless®)	0 - 100 psig / 0 - 7.0 bar			
		Chromite (Stainless®)	Stainless (Inconel®)	0 - 100 psig / 0 - 7.0 bar										9 - Nickel Alloy (Inconel®)	Cobalt Chrome (Stainless®)	Nickel Alloy (Inconel®)	0 - 100 psig / 0 - 7.0 bar			
		Chromite (Stainless®)	Stainless (Inconel®)	0 - 100 psig / 0 - 7.0 bar										6 - 316 (Stainless®)	Cobalt Chrome (Stainless®)	316 (Stainless®)	0 - 100 psig / 0 - 7.0 bar			
		Chromite (Stainless®)	Stainless (Inconel®)	0 - 100 psig / 0 - 7.0 bar										9 - Nickel Alloy (Inconel®)	Cobalt Chrome (Stainless®)	Nickel Alloy (Inconel®)	0 - 100 psig / 0 - 7.0 bar			
		Chromite (Stainless®)	Stainless (Inconel®)	0 - 100 psig / 0 - 7.0 bar										6 - 316 (Stainless®)	Cobalt Chrome (Stainless®)	316 (Stainless®)	0 - 100 psig / 0 - 7.0 bar			
		Chromite (Stainless®)	Stainless (Inconel®)	0 - 100 psig / 0 - 7.0 bar										9 - Nickel Alloy (Inconel®)	Cobalt Chrome (Stainless®)	Nickel Alloy (Inconel®)	0 - 100 psig / 0 - 7.0 bar			
		Chromite (Stainless®)	Stainless (Inconel®)	0 - 100 psig / 0 - 7.0 bar										6 - 316 (Stainless®)	Cobalt Chrome (Stainless®)	316 (Stainless®)	0 - 100 psig / 0 - 7.0 bar			
		Chromite (Stainless®)	Stainless (Inconel®)	0 - 100 psig / 0 - 7.0 bar										9 - Nickel Alloy (Inconel®)	Cobalt Chrome (Stainless®)	Nickel Alloy (Inconel®)	0 - 100 psig / 0 - 7.0 bar			
		Chromite (Stainless®)	Stainless (Inconel®)	0 - 100 psig / 0 - 7.0 bar										6 - 316 (Stainless®)	Cobalt Chrome (Stainless®)	316 (Stainless®)	0 - 100 psig / 0 - 7.0 bar			
		Chromite (Stainless®)	Stainless (Inconel®)	0 - 100 psig / 0 - 7.0 bar										9 - Nickel Alloy (Inconel®)	Cobalt Chrome (Stainless®)	Nickel Alloy (Inconel®)	0 - 100 psig / 0 - 7.0 bar			
		Chromite (Stainless®)	Stainless (Inconel®)	0 - 100 psig / 0 - 7.0 bar										6 - 316 (Stainless®)	Cobalt Chrome (Stainless®)	316 (Stainless®)	0 - 100 psig / 0 - 7.0 bar			
		Chromite (Stainless®)	Stainless (Inconel®)	0 - 100 psig / 0 - 7.0 bar										9 - Nickel Alloy (Inconel®)	Cobalt Chrome (Stainless®)	Nickel Alloy (Inconel®)	0 - 100 psig / 0 - 7.0 bar			
		Chromite (Stainless®)	Stainless (Inconel®)	0 - 100 psig / 0 - 7.0 bar										6 - 316 (Stainless®)	Cobalt Chrome (Stainless®)	316 (Stainless®)	0 - 100 psig / 0 - 7.0 bar			
		Chromite (Stainless®)	Stainless (Inconel®)	0 - 100 psig / 0 - 7.0 bar										9 - Nickel Alloy (Inconel®)	Cobalt Chrome (Stainless®)	Nickel Alloy (Inconel®)	0 - 100 psig / 0 - 7.0 bar			
		Chromite (Stainless®)	Stainless (Inconel®)	0 - 100 psig / 0 - 7.0 bar										6 - 316 (Stainless®)	Cobalt Chrome (Stainless®)	316 (Stainless®)	0 - 100 psig / 0 - 7.0 bar			
		Chromite (Stainless®)	Stainless (Inconel®)	0 - 100 psig / 0 - 7.0 bar										9 - Nickel Alloy (Inconel®)	Cobalt Chrome (Stainless®)	Nickel Alloy (Inconel®)	0 - 100 psig / 0 - 7.0 bar			
		Chromite (Stainless®)	Stainless (Inconel®)	0 - 100 psig / 0 - 7.0 bar										6 - 316 (Stainless®)	Cobalt Chrome (Stainless®)	316 (Stainless®)	0 - 100 psig / 0 - 7.0 bar			
		Chromite (Stainless®)	Stainless (Inconel®)	0																



Example for selecting a part number:

ELECTRIC MODEL		1		D		2		4		1		E	
BASIC SERIES	MATERIAL	OUTLET PRESSURE RANGE	HEATER	115VAC	230VAC	INLET AND OUTLET PORT TYPE	INLET AND OUTLET PORT SIZE	INLET PRESSURE	VENTAGE				
44-58	Nickel Alloy (Inconel®)	0 - 0.25 psig	A- 12.5Watts	10.0Watts	2- NPT	4- 1/8"	1- 6000psig	E- 115VAC					
	Nickel Alloy (Inconel®)	0.17 bar	0.10 amps	0.21 amps			418 bar	E- 115VAC					
	Steel	0.12 bar					41.375 MPa	E- 230VAC					
	316	0.50 psig	B- 25.0Watts	100.0Watts									
	316	0.34 bar	0.21 amps	0.84 amps									
	316	0.34 bar	0.345 Amps										
	316	0.100 psig	C- 50.0Watts	200.0Watts									
	316	0.68 bar	0.82 amps	3.31 amps									
	316	0.68 bar	0.82 amps	3.31 amps									
	316	0.250 psig	D- 100.0Watts	400.0Watts									
	316	1.72 bar	1.67 amps	6.67 amps									
	316	1.72 bar	1.67 amps	6.67 amps									
	316	0.500 psig	E- 200.0Watts	800.0Watts									
	316	3.45 bar	1.67 amps	6.67 amps									

STEAM MODEL		1		2		4		1		5	
BASIC SERIES	MATERIAL	OUTLET PRESSURE RANGE	INLET AND OUTLET PORT TYPE	INLET AND OUTLET PORT SIZE	INLET PRESSURE						
44-58	Nickel Alloy (Inconel®)	0 - 0.25 psig	2- NPT	4- 1/8"	1- 6000psig						
	Nickel Alloy (Inconel®)	0.17 bar			418 bar						
	316	0.17 bar			41.375 MPa						
	316	0.34 bar									
	316	0.34 bar									
	316	0.100 psig									
	316	0.68 bar									
	316	0.68 bar									
	316	0.250 psig									
	316	1.72 bar									
	316	1.72 bar									
	316	0.500 psig									
	316	3.45 bar									

