

MODELL NA4

Omkoblingsregulator

NA4

Omkoblingspanel for 16 sylindere

- Inngangstrykk: opptil 207 bar
- 10 ulike utgangstrykk: 0–2, 1,0–4, 1,0–6,9, 0–10,3, 0–13,8, 0–20,7, 0–34,5, 0–51,7, 0–68,9 og 0–103 bar
- Prøvetakingssystem for petrokjemiske analysatorer
- Temperaturområde: -40 °C til 74 °C
- Cv: 0,06

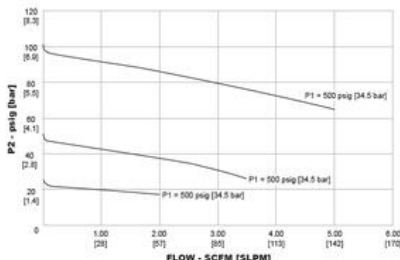


PRODUKTBESKRIVELSE

Kompakt ettrinns omkoblingsregulator for applikasjoner med høy renhet og høy flow, egnet for spesialgasser, brennbare gasser og industrigasser med flow fra 5–50 SCFM / 141–1415 SLPM. Diffusjonstett metallmembran sikrer gassens renhet og integritet. Leveres som et komplett system.

TEKNISKE DATA

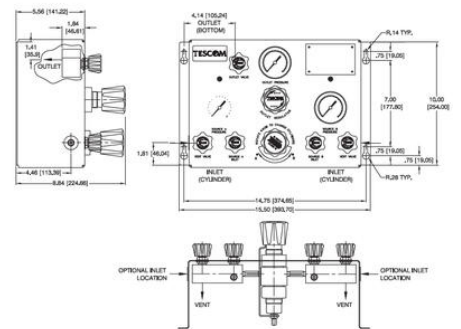
Flow capacity	0,06 Cv
Max Inlet Pressure	207 bar
Max Outlet Pressure	103 bar
Temperaturområde fra	-40 °C
Temperaturområde til	74 °C
Vekt	4,5 kg



Example for selecting a part number:

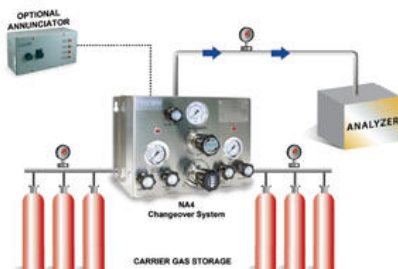
BASIC SERIES	INLET & OUTLET PORT SIZE & TYPE	BODY MATERIAL	OUTLET PRESSURE RANGE	MAXIMUM INLET PRESSURE	OUTLET RELIEF VALVE	REGULATOR TYPE	PRESSURE SWITCH OPTIONS	ANNUNCIATOR OPTIONS	CHECK/SHUT-OFF VALVE OPTIONS	CONNECTION TYPE	NUMBER OF BOTTLES
NA4	1/2" NPT	316 SS	1-2000 psig	200 bar	1-1/2"	1-1/2"	1-None 2-Warning 3-Warning with integral micro-switch/light 4-Warning with integral micro-switch/light/NO light or light lock-on panel	1-None 2-None 3-Flour (standard) with integral micro-switch/light 4-Flour (standard) with integral micro-switch/light/NO light or light lock-on panel	1-Standard check valve (all outlets of panel) 2-Check valve integral with check valve 3-Check valve integral with check valve 4-Check valve integral with check valve (all outlets of panel and shut-off valve on each house)	1-Standard 2-1/2" 3-1/2" 4-1/2" 5-1/2" 6-1/2" 7-1/2" 8-1/2" 9-1/2"	8 3 4 8 16 12 14 16

NO.	OUTLET PRESSURE	CHANGEOVER DELIVERY	PRESSURE SWITCH SETTING	OUTLET GAUGE	RELIEF VALVE CRACK PRESSURE
C	0-20	150	200	60	45
D	0-20	270	200	60	45
E	0-50	270	200	160	90
F	0-100	270	200	200	150
G	0-150	270	200	200	225
H	0-200	270	200	200	275
I	0-200	450	200	200	300
J	0-200	450	200	200	450
K	0-500	700	770	1000	750
L	0-750	900	900	1000	1125
M	0-1000	1200	1220	2000	1500
N	0-1500	2000	2200	2000	2000

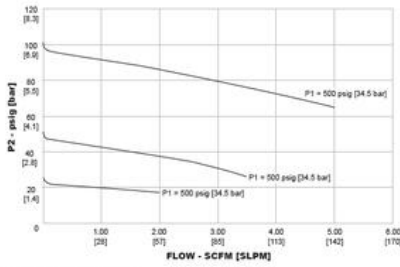


All dimensions are reference dimensions.
 Metric (millimeter) equivalents are in brackets.

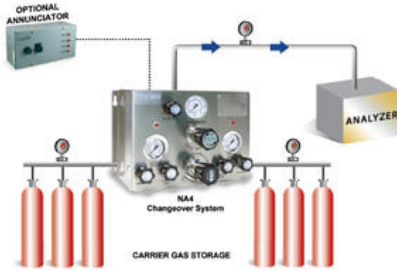
NA4 Series Typical Installations



NO.	CONNECTION TYPE	PRESSURE SWITCH AND RELIEF VALVE O-RING	HOSE CODE MATERIAL	HOUSING MATERIAL
1	No GCA (Nitrogen, No Hoses)	N/A	N/A	N/A
1	1/2" Female End	None	Teflon	Stainless Steel 316
2	1/2" Female End	None	Nylon	Polyethylene
3	GCA 100 (Oxygen)	None	Nylon	Polyethylene
4	GCA 300 (Argon, Nitrogen)	None	Teflon	Stainless Steel 316
5	GCA 500 (Oxygen)	None	Nylon	Polyethylene
6	GCA 210 (Carbon Dioxide)	None	Teflon	Stainless Steel 316
7	GCA (Inert)	None	Nylon	Polyethylene
8	PCG (Argon, Nitrogen)	None	Teflon	Stainless Steel 316
9	GGC (Inert)	None	Nylon	Polyethylene
A	FCR (Carbon Dioxide)	None	Teflon	Stainless Steel 316
B	1/2" Female End	None	Stainless Steel	Stainless Steel 316



NAA Series Typical Installations

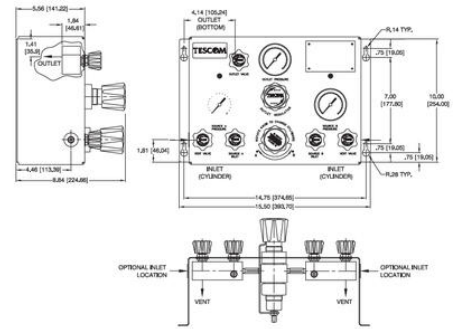


Example for selecting a part number:

1		6		2		1		1		0		5		4		6		4	
BASIC MODEL	INLET & OUTLET PORTS, SIZE & TYPE	BODY MATERIAL	OUTLET PRESSURE RANGE	MAXIMUM INLET PRESSURE	OUTLET RELIEF VALVE	REGULATOR TYPE	PRESSURE SWITCH OPTIONS	ANNUNCIATOR OPTIONS	CHECK/OFF/SHUT-OFF VALVE OPTIONS	CONNECTION TYPE	NUMBER OF BOTTLES								
NAA	1 - 1/4" NPT	1 - Brass	1 - 200 psig	2000 psig	0 - No	0 - None	0 - None	0 - None	0 - None	0 - None	0								
		2 - 316 Stainless Steel			1 - Yes	1 - None	1 - Gauge with integral switch or 2 - Gauge with integral switch on panel	1 - None	1 - Standard check valve (at inlet)	1 - None	2								
							3 - Gauge with integral switch on 90 degree or 45 degree panel	2 - None	2 - Check valve (CCA or FC supply)	2 - None	4								
							4 - Gauge with integral switch on 90 degree or 45 degree panel	3 - None	3 - Check valve (CCA or FC supply)	3 - None	6								
							5 - Gauge with integral switch on 90 degree or 45 degree panel	4 - None	4 - Check valve (CCA or FC supply)	4 - None	8								
							6 - Gauge with integral switch on 90 degree or 45 degree panel	5 - None	5 - Check valve (CCA or FC supply)	5 - None	10								
							7 - Gauge with integral switch on 90 degree or 45 degree panel	6 - None	6 - Check valve (CCA or FC supply)	6 - None	12								
							8 - Gauge with integral switch on 90 degree or 45 degree panel	7 - None	7 - Check valve (CCA or FC supply)	7 - None	14								
							9 - Gauge with integral switch on 90 degree or 45 degree panel	8 - None	8 - Check valve (CCA or FC supply)	8 - None	16								

NO.	OUTLET PRESSURE	CHANGEOVER EXHAUST	PRESSURE SWITCH SETTING	OUTLET GASKET CRACK PRESSURE	RELIEF VALVE CRACK PRESSURE
C	0-20	150	200	60	45
E	0-20	270	200	60	45
I	0-50	270	200	100	60
J	0-100	270	200	200	150
K	0-200	270	200	200	225
L	0-200	270	200	200	275
M	0-200	450	200	200	275
N	0-200	450	200	200	450
O	0-500	750	200	200	750
P	0-750	900	200	200	1125
Q	0-1000	1200	200	200	1500
R	0-1500	2000	200	200	2000

NO.	CONNECTION TYPE	PRESSURE SWITCH AND RELIEF VALVE OR BING	HOSE CORE MATERIAL	HOSE JACKET MATERIAL
0	0 - CCA (Plastic, No Relief)	N/A	N/A	N/A
1	1/4" Female End	None	Teflon®	Stainless Steel Shell
2	1/4" Female End	None	Nylon	Polycarbonate
3	CCA 500 (Inlet)	None	Nylon	Polycarbonate
4	CCA 500 (Inlet, Nitrogen)	None	Teflon®	Stainless Steel Shell
5	CCA 500 (Inlet, Oxygen)	None	Nylon	Polycarbonate
6	CCA 500 (Inlet, Standard)	None	Teflon®	Stainless Steel Shell
7	912 (Inlet)	None	Nylon	Polycarbonate
8	912 (Inlet)	None	Teflon®	Stainless Steel Shell
9	912 (Inlet)	None	Nylon	Polycarbonate
A	912 (Inlet)	None	Teflon®	Stainless Steel Shell
E	1/4" Female End	None	Stainless Steel	Stainless Steel Shell



All dimensions are reference & nominal
Metric (millimeter) equivalents are in brackets